





Concave lid design allows condensation flow back to the tank.



Side opening of the lid to allow minimum evaporation while maintaining water bath temperature.



Water circulation function

-  Magnetic agitator
-  Stir bar

Specifications

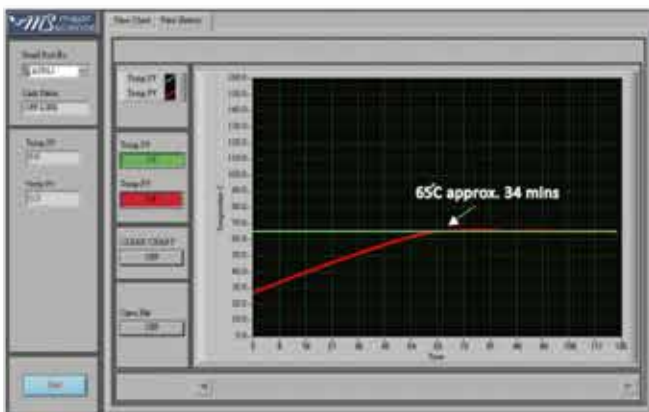
| Cat. No. | SWB-10L-1 | SWB-10L-2 | SWB-20L-1 | SWB-20L-3 |
|---------------------------------|---|-----------|--|-----------|
| Number Of Stirring Mechanisms | 1 | 2 | 1 | 3 |
| Stirring Speed | 400-1500rpm (measured by percentage, nonlinearity) | | | |
| Bath Capacity | Approx. 2.64gal (10L) | | Approx. 5.28gal (20L) | |
| Water Circulation Function | Yes | | | |
| Display | LCD | | | |
| Heating Power | 600W | | 800W | |
| Controller | Digital microprocessor controller | | | |
| Bath Temperature | 5 °C above ambient to 99 °C | | | |
| Temperature Increment | 0.1°C | | | |
| Temperature Accuracy | ±0.2 °C at 37 °C | | | |
| Temperature Calibration | Yes | | | |
| Timer | 99 (hr): 59 (min) / Continuous | | | |
| Safety Device | Warning indication on screen with alarm and automatic shut down | | | |
| Operating Temperature | Ambient to 40 °C | | | |
| Bath Tank Material | 304 stainless steel | | | |
| Bath Inner Dimension (WxLxH) | Approx. 9.5"x11.8"x5.9" (240x300x150mm) | | Approx. 11.8"x19.7"x5.9" (300x500x150mm) | |
| Dimension (WxLxH) (without lid) | Approx. 10"x14"x9.5" (255x355x240mm) | | Approx. 13"x21.3"x9.5" (330x540x240mm) | |
| Rear Drainage Port | N / A | | Yes | |
| Material | Painted iron metal | | | |
| Lid Material | Polycarbonate with stainless steel handle | | | |
| Communication Port | RS232 | | | |
| Weight | Approx. 19.8lb (9kg) | | Approx. 30.9lb (14kg) | |
| Rated Voltage | 110V / 220V~ | | | |

Ordering Information



| Cat. No. | Product Description |
|---------------------|--|
| SWB-10L-1-110 / 220 | 10L Stirring Water Bath with 1 built-in stirring mechanism, lid included |
| SWB-10L-2-110 / 220 | 10L Stirring Water Bath with 2 built-in stirring mechanism, lid included |
| SWB-20L-1-110 / 220 | 20L Stirring Water Bath with 1 built-in stirring mechanism, lid included |
| SWB-20L-3-110 / 220 | 20L Stirring Water Bath with 3 built-in stirring mechanism, lid included |

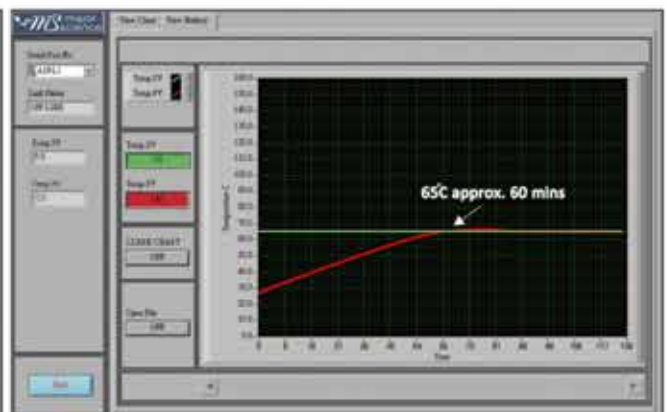
Accessories

| Cat. No. | Product Description |
|------------|---|
| SWB-LID10 | Transparent lid for 10L Stirring Water Bath |
| SWB-LID20 | Transparent lid for 20L Stirring Water Bath |
| SWB-RS232 | RS 232 cable for data logging |
| SWB-DLSW | Data Logging software package |
| SWB-DLSW-R | Data Logging software package, include a RS 232 cable |





SWB-10L series

-  Temp. set value : 65 °C
-  Initial temp. value : 17 °C
- Water volume : 5 liters
- Process time : Approx. 34mins



SWB-20L series

-  Temp. set value : 65 °C
-  Initial temp. value : 27 °C
- Water volume : 12 liters
- Process time : Approx. 60mins

* All images are for reference only, actual products might differ from the pictures above.
* Technical specifications subject to change without notice.