

NEUATION



MIX IT UP!

iSwix
Vortex Mixer

iSwix Vortex Mixer

The sign of a quality Vortex Mixer is consistent reliability and performance. A researcher in a laboratory has to produce consistent and precise result, which calls for equally consistent equipment, but more often than not, products from mass-market manufacturers tend to offer lackluster performance due to the use of low-quality components and materials in a bid to reduce manufacturing costs and increase profits. The result are products that don't deliver sufficient power to properly mix samples.

We, at Neuation take pride in our extensive production process which involves a long R&D process based on user feedback and opinions. As a result, our products are informed by real-world usage statistics which help us build products that cater to every requirement of the user. In addition to superior performance and reliability, the presence of class-leading features such as inbuilt counter balance, optional attachments and IP21 rating deliver an exceptional usage experience.



Product Features



Non-corrosive Body
For Long And Durable
Performance.

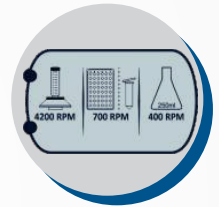


Orbital Diameter
Of 4 MM



Adjustable Speed Range
Upto 2800 RPM With An
Accuracy Of +/-5%

Visual Indication Marker
For Max Speed With
Attachments



AC Synchronous Motor
For Efficient Noiseless
Operation



Inbuilt Counter Balance
Ensures Stable Operation For
Complete Peace-of-mind



Product Features



Small Footprint Saves Valuable Bench Space And Can Also Be Used Inside Hoods And Cold Rooms



IP21 Compliant Design Makes It Spill Safe

3-way Switch For Touch, Continuous & Stand-by Mode For Unmatched Convenience



Standard Attachments



Rubber Disk Attachment



Cup Attachment

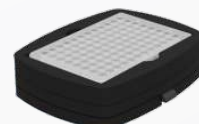


Round Disc

Optional Attachments



Micro Centrifuge Tube
24 X 1.5/2ml



96 Well Micro Plate



Flask

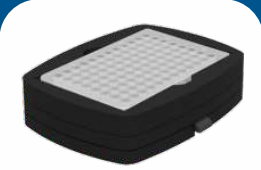
Specifications

iSwix	
Max Speed	2800 RPM
Orbital diameter	4 mm
Motor type	AC Synchronous
Max Load Capacity	500 gm
Speed accuracy	± 5%
Different modes Touch, Stand-by & Continuous mode	Touch, Stand-by & Continuous mode
Dimensions	205 x 136 x 138.5 mm
Power Supply	220 - 240VAC, 50Hz
Ambient temperature	5 to 40°C
Weight	3 kg
Optional Attachments (not included)	Universal platform for attaching either - Microplate / Microtube / Flask / Round Disk Attachments


Ordering Information

iSwix		
Product Name	Cat #	Details
iSwix	VM-1210 EU/US/UK/AU	Analog Vortex Mixer
Attachment	VM-A1	Cup Attachment
	VM-A8	Rubber Cup Disk Attachment


Accessories



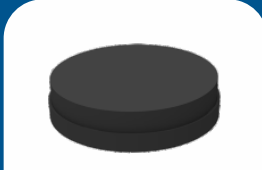
Microplate
CAT. NO. # VM-A3



Flask
CAT. NO. # VM-A4



Micro Centrifuge Tubes
CAT. NO. # VM-A2



Round Disc
CAT. NO. # VM-A6

NEUATION

www.neuation.com

AN ISO 9001 : 2015 & ISO 13485 : 2016 CERTIFIED MFG. COMPANY

*We also execute OEM projects. Specifications can be changed without notice for quality improvement.