

Specifications

| Camera Spec. | |
|-------------------------------|------------------------------------------------------------------------------------------------------------------|
| Camera Type | 24.1MP digital camera, Wi-Fi function |
| Effective Pixels | Approx. 24.1megapixels (Total Pixels Approx. 25.8 megapixels) |
| Sensor | 22.3 x 14.9mm CMOS sensor |
| Max. Aperture | f/3.5-6.3 (IS STM Lens) |
| Shutter Speed | 30 - 1/4000 sec (1/3 stop increments), Bulb (Total shutter speed range. Available range varies by shooting mode) |
| Storage Media | SD memory card, Wi-Fi to PC, Smartphone or Tablet |
| Computer Interface | Hi Speed USB (Micro), HDMI(Micro), WiFi connection |
| Video Out | Full HD / HD / MP4 / 4K |
| Image Resolution | (3:2)6000x4000 |
| Lens | 35mm film equivalent to 1.6x the focal length |
| File Format | Designed rule for Camera File system 2.0 |
| Data Type | JPEG, RAW(CR3 14 bit) RAW+JPEG simultaneous recording possible |
| Filter (For Camera, Optional) | "EtBr filter / SYBR Green filter / Amber Filter *ordered separately" |
| Monitor | |
| Type | 8" TFT LCD Monitor |
| Resolution | 1024x600 pixels |
| Brightness | 300cd / m ² |
| Constant Ratio | 700:1 |
| Display Mode | NTSC / PAL auto switch |

| DI-01 Spec. | |
|--------------------|-------------------------------------------|
| Multi-Power Source | For camera, Inner light lamp, TFT monitor |
| Inner White Light | 2 white LED, 3 watt/LED |
| Safety Device | Safety door switch |
| Dimension (WxLxH) | 11.4"x13.3"x15.9" (290x339x403mm) |
| Material | Painted metal |
| Rated Voltage | 110/220V~, 50/60Hz, 1.6A |
| Weight | Approx. 12.9lb (5.8kg) |
| Camera Adapter | Aluminum |
| DI Darkroom | |
| Dimension (WxLxH) | 11.4"x13.3"x15.7" (290x339x398mm) |
| Weight | Approx. 11.9lb (5.4kg) |

Ordering Information

| Cat. No. | Description |
|----------|-----------------------------------------------------|
| DI-01 | Digimage System with 24.1 megapixels digital camera |
| DI-HD | Digimage System without digital camera |

Accessories

| Cat. No. | Description |
|-----------------------------------------|----------------------------------------|
| DI-DR-E12 | DC coupler |
| DI-WLA3-110/220 | White Light Table 297x400mm (110/220V) |
| DI-WLA4-110/220 | White Light Table 210x297mm (110/220V) |
| DI-WLA6-110/220 | White Light Table 105x150mm (110/220V) |
| Filter (for camera) *ordered separately | |
| DI-EB49 | EtBr filter, 49mm |
| DI-SG49 | SYBR Green filter, 49mm |
| DI-AM49 | Amber filter, 49mm |

*Filters are necessary part for Gel Documentation System.

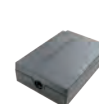
*All filters have to be ordered separately and discuss with local dealer before order.



DI-01 + MUV series



DI-01 + MUVB series



DI-DR-E12



DI-WLA3 (297x400mm)
DI-WLA4 (210x297mm)
DI-WLA6 (105x150mm)



DI-EB49



DI-SG49



DI-AM49

* All images are for reference only, actual products might differ from the pictures above.
* Technical specifications subject to change without notice.