

Specifications



UVCI-2300-EB



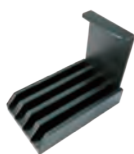
UVCI-2300-SG



UVCI-2300-F4



UVCI-2313



UVCI-2314



UVCI-2300-BL



UVCI-2300-WL



MJC-8-STYLUS-00000



CI-CL55+1

Model	SmartView Pro 2300
Cat. No.	UVCI-2300
Camera	1/1.8" interline UXGA monochrome progressive 2.0MP CCD
Pixels Size	4.4µm x 4.4µm
Lens (Camera)	F1.2, 12.5 – 75mm (with one +1 close-up lens), 6X zoom lens, manual
Camera Video Output	12bit
Filter (Camera) *Ordered Separately	Optical EtBr Filter / Optical SYBR Green Filter / Orange Amber Filter
Image Storage	Built-in 14GB Memory (3000 tiff images storage) and USB flash
Cabinet	Pull out, sliding transilluminator
Field Of View (WxL)	Maximum field of view 10.2"x8.3" (260x210mm)
Dimension (WxLxH)	Approx. 16.1"x16.7"x35.8" (410x425x910mm)
Weight	Approx. 62.8lbs. (28.5kg)
Display	10.4" color touch screen, 800x600
Viewing Window	Built-in UV viewing window
Window Filter	Amber Filter embedded in viewing window (580nm)
Light Source	Built-in drawer type UV Transilluminator 312(302)nm build-in LED white light
Optional Accessory	White Light Plate (power built-in) Blue light plate (power built-in) 470nm
Saved Image	Max. 16bit
Grayscale	12bit, 0-4095 gray levels
Safety	CE
Rated Voltage	100-240V~, 50/60Hz

*MS 1D Analysis Software (MBE-IMG-SW) is included in for image analysis only.

Ordering Information

Cat. No.	Product Description
UVCI-2300	SmartView Pro 2300 Imager System, UV light version

*Filters are necessary part for Gel Documentation System.

*All filters have to be ordered separately and discuss with local dealer before order.

Accessories

Cat. No.	Product Description
UVCI-2300-EB	SmartView EtBr Filter, 610nm (for UV)
UVCI-2300-SG	SmartView SYBR Green Filter, 520nm (for UV)
UVCI-2300-F4	SmartView Amber Filter, 580nm (for blue light)
UVCI-2313	SmartView Pro UV Protection Shield
UVCI-2314	SmartView Pro Lens Filter Stand, can hold up to 4 lens filters
UVCI-2300-BL	Blue Light Plate
UVCI-2300-WL	White Light Plate 210x260mm
MJC-8-STYLUS-00000	Stylus Pen
CI-CL55+1	55mm Close up lens +1 for CCD Image System



Viewing via window



Viewing via screen



Viewing window
(Amber filter, 580nm)

Specifications

Model	SmartView Pro 1100
Cat. No.	UVCI-1100
UV Light	Built-in drawer type UV Transilluminator 312(302)nm
Camera	1/2.5" 5M Pixel Monochrome sensor
Pixels Size	2.2µmx2.2µm
Lens (Camera)	6mm, F1.2
Camera Video Output	12-bit
Filter (Camera) *Ordered separately	Optical EtBr Filter / Optical SYBR Green Filter / Yellow Amber Filter / Orange Amber Filter
Image Storage	PC
Software Support	Window 10 / 8 / 7 (64bit & 32bit) / XP / Vista
Cabinet	Pull out, sliding transilluminator
Field Of View (WxL)	Approx. 10.2"x8.3" (260x210mm)
Dimension (WxLxH)	Approx. 16.1"x15.9"x22.4" (410x405x570mm)
Weight	Approx. 54lbs. (24.5kg)
Display	LED indicator light
Viewing Window	Built-in UV viewing window
Window Filter	Built-in Viewing Window Amber Filter 560nm
Light	White light (standard)
Optional Accessory	White Light Plate (power built-in)
	Blue light (power built-in) 470nm
Safety	CE, FCC
PC Connection	USB port
1 D Analysis Software	Cat. No. MBE-IMG-SW included
Saved Image	BMP/JPEG/PNG/TIFF, 8 bit; PNG/TIFF, 16 bit
Rated Voltage	100-240V~, 50/60Hz, 2A

* iPad and PC is not included.

* MS 1D Analysis Software (MBE-IMG-SW) is included in UVCI-1100 for image capture and analysis .

Ordering Information

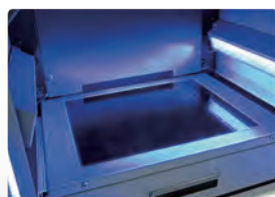
Cat. No.	Product Description
UVCI-1100	SmartView Pro 1100 Imager System, standard version
UVCI-1101	SmartView Pro 1100 Imager System, standard version, high UV performance

*Filters are necessary part for Gel Documentation System.

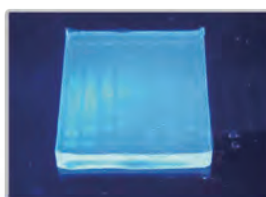
*All filters have to be ordered separately and discuss with local dealer before order.

Accessories

Cat. No.	Product Description
UVCI-1000-WL	White Light Plate for SmartView Pro Imager System
UVCI-1000-BL	Blue Light Module for SmartView Pro Imager System
UVCI-1100-EB	SmartView EtBr Filter, 610nm (for UV)
UVCI-1100-SG	SmartView SYBR Green Filter, 520nm (for UV)
UVCI-1100-F3	SmartView Amber Filter 560nm
UVCI-1100-F4	SmartView Amber Filter 580nm
UVCI-1000-F1	Viewing window Amber filter, 560nm for SmartView Pro Imager System
UVCI-1003	SmartView Pro UV Protection Shield
UVCI-1004	SmartView Pro Lens Filter Stand, can hold up to 4 lens filters
MBE-G-Y1	Amber Filter Viewing Glasses, 560 nm (optional)



Epi-blue light for optional light source



Optional blue light device



Sliding transilluminator