

## Specifications



UVCI-2300-EB



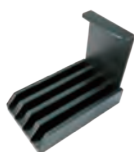
UVCI-2300-SG



UVCI-2300-F4



UVCI-2313



UVCI-2314



UVCI-2300-BL



UVCI-2300-WL



MJC-8-STYLUS-00000



CI-CL55+1

Model	SmartView Pro 2300
Cat. No.	UVCI-2300
Camera	1/1.8" interline UXGA monochrome progressive 2.0MP CCD
Pixels Size	4.4µm x 4.4µm
Lens (Camera)	F1.2, 12.5 – 75mm (with one +1 close-up lens), 6X zoom lens, manual
Camera Video Output	12bit
Filter (Camera) *Ordered Separately	Optical EtBr Filter / Optical SYBR Green Filter / Orange Amber Filter
Image Storage	Built-in 14GB Memory (3000 tiff images storage) and USB flash
Cabinet	Pull out, sliding transilluminator
Field Of View (WxL)	Maximum field of view 10.2"x8.3" (260x210mm)
Dimension (WxLxH)	Approx. 16.1"x16.7"x35.8" (410x425x910mm)
Weight	Approx. 62.8lbs. (28.5kg)
Display	10.4" color touch screen, 800x600
Viewing Window	Built-in UV viewing window
Window Filter	Amber Filter embedded in viewing window (580nm)
Light Source	Built-in drawer type UV Transilluminator 312(302)nm build-in LED white light
Optional Accessory	White Light Plate (power built-in) Blue light plate (power built-in) 470nm
Saved Image	Max. 16bit
Grayscale	12bit, 0-4095 gray levels
Safety	CE
Rated Voltage	100-240V~, 50/60Hz

\*MS 1D Analysis Software (MBE-IMG-SW) is included in for image analysis only.

## Ordering Information

Cat. No.	Product Description
UVCI-2300	SmartView Pro 2300 Imager System, UV light version

\*Filters are necessary part for Gel Documentation System.

\*All filters have to be ordered separately and discuss with local dealer before order.

## Accessories

Cat. No.	Product Description
UVCI-2300-EB	SmartView EtBr Filter, 610nm (for UV)
UVCI-2300-SG	SmartView SYBR Green Filter, 520nm (for UV)
UVCI-2300-F4	SmartView Amber Filter, 580nm (for blue light)
UVCI-2313	SmartView Pro UV Protection Shield
UVCI-2314	SmartView Pro Lens Filter Stand, can hold up to 4 lens filters
UVCI-2300-BL	Blue Light Plate
UVCI-2300-WL	White Light Plate 210x260mm
MJC-8-STYLUS-00000	Stylus Pen
CI-CL55+1	55mm Close up lens +1 for CCD Image System



Viewing via window



Viewing via screen



Viewing window  
(Amber filter, 580nm)