

SmartView Pro Imager

UVCI-2300

MS UVCI-2300, the truly standalone Gel Imaging System, delivers incredible image and sharpness with the power of an exceptional close-up monochrome 2.0 mega-pixel CCD camera, and get you ready for beautifully discriminable DNA/Protein gel images in the spaciouly intuitive 10.4" interface with color touch-screen. Our innovative systems are expandable with white and blue light plates coupled with the versatility of camera filters, no matter it's an EtBr or EtBr-free operations, simply tab to view. Many post-imaging features like drawer-type platform and UV protection shield are added to your convenience for gel excision.

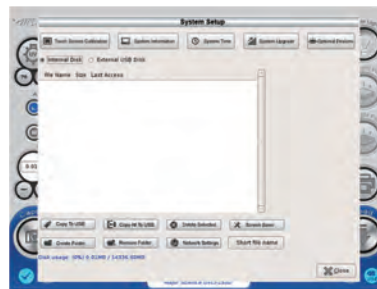


UVCI-2300

2.0 MP CCD Camera



Control Interface



System setup



Default setting

Features

- Standalone gel doc system with high-quality monochrome CCD
- Exchangeable emission Filters provide for instant visualization
- Intuitive 10.4" interface with color touch-screen
- Zoom-able lens for proper picture size
- Movable platform for gel excision with UV-protection shield
- Automatic UV shut off mechanism
- Optional trans white light and blue light plates



UV light protection warning

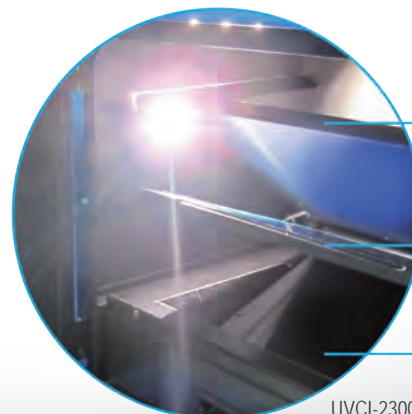


Batch file management



Blue light plate

White light plate



White Light Plate (Flip type)

Blue Light Plate (Flip type)

UV Transilluminator (Drawer type)

UVCI-2300

* All images are for reference only, actual products might differ from the pictures above.
* Technical specifications subject to change without notice.

Specifications



UVCI-2300-EB



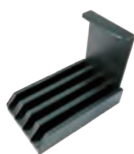
UVCI-2300-SG



UVCI-2300-F4



UVCI-2313



UVCI-2314



UVCI-2300-BL



UVCI-2300-WL



MJC-8-STYLUS-00000



CI-CL55+1

Model	SmartView Pro 2300
Cat. No.	UVCI-2300
Camera	1/1.8" interline UXGA monochrome progressive 2.0MP CCD
Pixels Size	4.4µm x 4.4µm
Lens (Camera)	F1.2, 12.5 – 75mm (with one +1 close-up lens), 6X zoom lens, manual
Camera Video Output	12bit
Filter (Camera) *Ordered Separately	Optical EtBr Filter / Optical SYBR Green Filter / Orange Amber Filter
Image Storage	Built-in 14GB Memory (3000 tiff images storage) and USB flash
Cabinet	Pull out, sliding transilluminator
Field Of View (WxL)	Maximum field of view 10.2"x8.3" (260x210mm)
Dimension (WxLxH)	Approx. 16.1"x16.7"x35.8" (410x425x910mm)
Weight	Approx. 62.8lbs. (28.5kg)
Display	10.4" color touch screen, 800x600
Viewing Window	Built-in UV viewing window
Window Filter	Amber Filter embedded in viewing window (580nm)
Light Source	Built-in drawer type UV Transilluminator 312(302)nm build-in LED white light
Optional Accessory	White Light Plate (power built-in) Blue light plate (power built-in) 470nm
Saved Image	Max. 16bit
Grayscale	12bit, 0-4095 gray levels
Safety	CE
Rated Voltage	100-240V~, 50/60Hz

*MS 1D Analysis Software (MBE-IMG-SW) is included in for image analysis only.

Ordering Information

Cat. No.	Product Description
UVCI-2300	SmartView Pro 2300 Imager System, UV light version

*Filters are necessary part for Gel Documentation System.

*All filters have to be ordered separately and discuss with local dealer before order.

Accessories

Cat. No.	Product Description
UVCI-2300-EB	SmartView EtBr Filter, 610nm (for UV)
UVCI-2300-SG	SmartView SYBR Green Filter, 520nm (for UV)
UVCI-2300-F4	SmartView Amber Filter, 580nm (for blue light)
UVCI-2313	SmartView Pro UV Protection Shield
UVCI-2314	SmartView Pro Lens Filter Stand, can hold up to 4 lens filters
UVCI-2300-BL	Blue Light Plate
UVCI-2300-WL	White Light Plate 210x260mm
MJC-8-STYLUS-00000	Stylus Pen
CI-CL55+1	55mm Close up lens +1 for CCD Image System



Viewing via window



Viewing via screen



Viewing window
(Amber filter, 580nm)