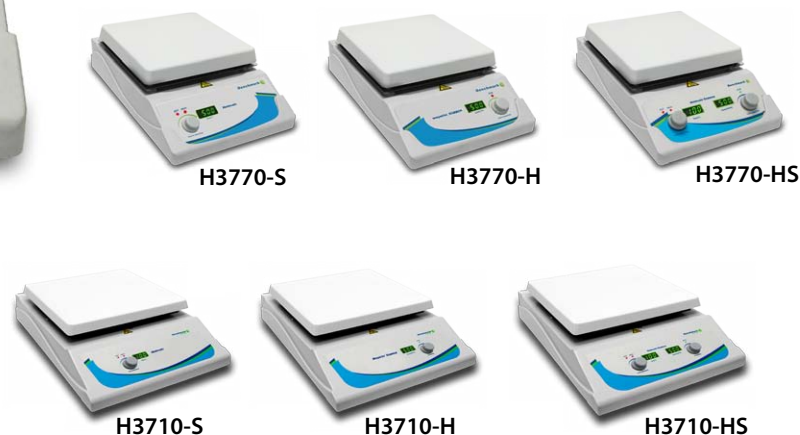




CE

- + Large white ceramic top plate
- + Safety LED indicates hot surface
- + Available with stir capacities up to 15L
- + Control actual sample temperature (with optional probe)



Benchmark Scientific Hotplates and Stirrers provide reliable performance and safe operation for everyday laboratory use. With two sizes (7" or 10") to choose from, each model features a durable, chemical resistant, white ceramic top plate and advanced microprocessor controls. The constant monitoring system provides precise control of temperature with rapid heating and faster boiling times (heating models only). In addition, the powerful motor drive system of the magnetic stirrer ensures efficient mixing in larger vessels and more viscous samples.

Temperature and/or mixing speed can be viewed at all times on the large digital display and a safety LED illuminates when the top plate temperature exceeds 50°C. An optional external temperature probe can be used for applications that require precise temperature control. The probe provides direct feedback to the microprocessor with adjustments for maintaining the selected sample temperature within ±1°C. An optional clamp assembly (H3770-CS) is available for mounting thermometers, temperature probes, etc.

Technical Data:

Speed Range	150 to 1500rpm*
Temp. Range	Ambient +5° to 400 °C*
Warranty:	2 Years
H3770 (7 x 7)	
Platform:	7 x 7 in. / 17.8 x 17.8 cm
Max Stir Capacity:	5L
Dimensions: (W x D x H)	7.5 x 11.5 x 4 in. / 18 x 27.9 x 10.1 cm
Weight:	8 lbs (3.6kg)
Electrical:	115V or 230V, 50-60 Hz, 850W
H3710 (10 x 10)	
Platform:	10 x 10 in. / 25.4 x 25.4 cm
Max Stir Capacity:	15L
Dimensions: (W x D x H)	11.6 x 16.7 x 4.5 in. / 29.5 x 42.4 x 11.4 cm
Weight:	8 lbs (3.6kg)
Electrical:	115V or 230V, 50-60 Hz, 1500W

* Speed and temperature adjustments available only on relevant models

Ordering Information:

Item No.	Description:
H3770-H*	Benchmark Digital Hotplate, 7 x 7"
H3770-S*	Benchmark Digital Magnetic Stirrer, 7 x 7"
H3770-HS*	Benchmark Digital Hotplate Stirrer, 7 x 7"
H3710-H*	Benchmark Digital Hotplate, 10 x 10"
H3710-S*	Benchmark Digital Magnetic Stirrer, 10 x 10"
H3710-HS*	Benchmark Digital Hotplate Stirrer, 10 x 10"
H3770-ROD	Optional support rod
H3770-TP	Optional temperature probe
H3770-CS	Clamp assembly with support rod and clamps for securing thermometers/probes

*115V with US plug. For 230V (EU plug), please add (-E).



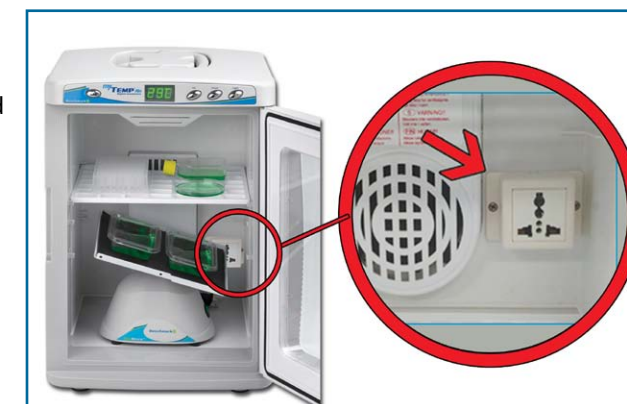
CE

- + Digital temperature control, with in-lab calibration
- + Personal sized, 13 x 14.5 in. footprint
- + Two models
 - Heat only
 - Heat & cool

With digital temperature control, the myTemp incubators provide convenient "set and walk away" operation, eliminating the need for external thermometers and repetitive "fine tuning" of an analog control knob. Simply choose the desired temperature and the incubators quickly begin to heat (or cool in the -HC model only). Throughout the incubation, the chamber temperature is constantly monitored and displayed in real time on the large LED control panel.

Despite a modest footprint of 14.5 x 13", the myTemp incubators feature large internal chambers, capable of accepting flasks and bottles up to 2 liters. The chamber temperature is accurately maintained with a unique airflow design that utilizes multiple internal fans, resulting in a high level of uniformity.

The incubators include two adjustable/removable shelves for increased capacity. A mini nutating rocker (supplied with both flat and dimpled mats) is also available for agitation of samples during incubation and can plug directly into the included internal power outlet.



myTemp Mini shown with H3D1020 (Rocker plugs directly into the internal power outlet)

Technical Data:

Temp. Range	H2200-H: Ambient +5° to 60°C H2200-HC: Ambient -15° to 60°C
Temp. Accuracy:	± 0.5°C (at 37°C)
Temp. Increments:	1°C
Temp. Uniformity:	± 1.5°C (at 37°C)
Capacity:	20L or 0.8 cu. ft.
Dimensions: (W x D x H)	Interior: 10.3 x 9.3 x 12.9 in. / 26 x 23.5 x 33 cm Exterior: 13.2 x 14.5 x 18.7 in. / 33.5 x 37 x 48 cm
Weight:	15 lbs (6.8kg)
Electrical:	Universal Voltage 100 to 240V, 50-60Hz, 70W
Warranty:	2 Years

Ordering Information:

Item No.	Description:
H2200-H*	myTemp Mini Digital Incubator, includes 2 shelves, (heat only, ambient +5° to 60°C)
H2200-HC*	myTemp Mini Digital Incubator, includes 2 shelves, (heat & cool, ambient -15° to 60°C)
H3D-1020	Mini nutating rocker, 6 x 8" platform, 115V
H3D-1020-E	Mini nutating rocker, 6 x 8" platform, 230V
H2200-SH	Extra shelf, 10.5 x 8" plastic (not autoclavable)

*Includes US plug. For EU plug, please add (-E).