



SURETEMP™

Dual-Convection Incubators with SureCheck™ Data Logging

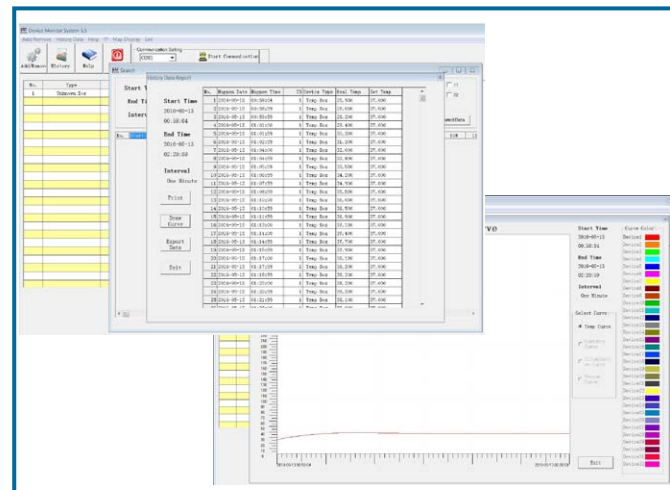
- + Precision temperature control up to 75°C
- + Dual-Convection- user adjustable to gravity or mechanical convection
- + Stainless steel internal chamber
- + Internal power outlet for shakers, mixers, etc.
- + SureCheck™ data logging port and software



The new SureTemp Incubator series provides the highest level of temperature control with uniformity and stability levels that are unmatched by competitive models in the same price class.

Each incubator is equipped with the SureCheck™ data logging system for verification of chamber temperature. The SureCheck system records temperature data points as often as every 60 seconds and stores this information on a flash drive. The data can then be viewed and saved using the included the SureCheck software. The recorded data can also be used to draw a temperature graph or exported to excel for further analysis or manipulation.

Unlike the vast majority of laboratory incubators, the SureTemp series offers “Dual-Convection” technology, allowing users to choose between mechanical convection mode (for exceptional uniformity) or gravity convection mode (for longer incubations where drying of plates may be an issue). Heating elements are strategically located on all sides of the chamber and contents can be viewed with the separate inner glass door without disrupting the temperature environment.



Included SureCheck™ Software: View/save recorded temperatures

Technical Data:

Temp. Range:	Ambient +5°C to 75°C
Temp. Accuracy:	± 0.25°C*
Temp. Uniformity:	± 0.25 °C*
Temp. Stability:	± 0.1°C*
Temp. Increments:	0.1°C
Dimensions: (WxDxH)	Exterior
H2505-40	22.4 x 23.3 x 22.8 in. / 57 x 59.2 x 58 cm
H2505-70	26.4 x 23.3 x 26.8 in. / 67 x 59.2 x 68 cm
H2505-130	30.3 x 27.2 x 30.7 in. / 77 x 69.2 x 78 cm
	Interior
H2505-40 (40L)	13.7 x 13.7 x 13.7 in. / 35 x 35 x 35 cm
H2505-70 (70L)	17.7 x 13.7 x 17.7 in. / 45 x 35 x 45 cm
H2505-130 (130L)	21.7 x 17.7 x 21.7 in. / 55 x 45 x 55 cm
Weight:	H2505-40: 42kg, -70: 62kg, -130: 70kg
Electrical:	120V, 60Hz or 230V, 50Hz (420W, 520W, 670W)
Warranty:	2 years

* Specification provided with a set temperature of 37°C



SureCheck data logging port



Internal power outlet

Ordering Information:

Item No.	Description:
H2505-40*	SureTemp Dual-Convection Incubator with SureCheck data logging software, 40L, 115V
H2505-70*	SureTemp Dual-Convection Incubator with SureCheck data logging software, 70L, 115V
H2505-130*	SureTemp Dual-convection Incubator with SureCheck data logging software, 130L, 115V
H2505-40SH	Extra shelf, stainless steel for H2505-40
H2505-70SH	Extra shelf, stainless steel for H2505-70
H2505-130SH	Extra shelf, stainless steel for H2505-130

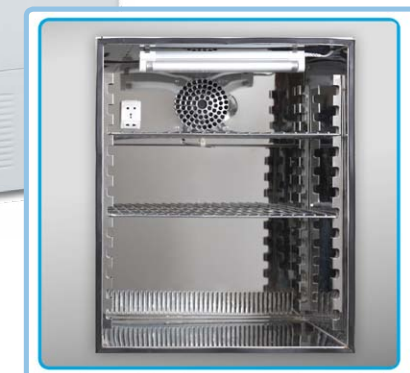
* 115V with US plug. For 230V (EU plug), please add (-E).

myTEMP™ 65HC

Precision, Heating & Cooling Incubator



- + Accurate temperature control from 0°C to 60°C
- + Powerful compressor, maintains 0°C
- + Stainless steel chamber
- + Internal power outlet for shakers, mixers, etc.
- + Sized for floor standing use or on bench-tops less than 32" high



Stainless steel chamber with internal outlet & light

The myTemp 65HC Incubator is designed to provide accurate and uniform temperature control from 0° to 60°C. The broad temperature range of the instrument expands the use of this incubator to both heating and cooling applications.

A large, digital display allows for visualization of the chamber temperature and the remaining incubation time, while an internal light is included for improved visualization of the chamber. In addition, a built in, internal outlet can be used to provide power to small instruments, such as shakers, rockers, etc.

Forced air technology and stainless steel inner construction ensure uniform heat transfer throughout the chamber. When set for sub-ambient temperatures, the powerful compressor is activated, quickly cooling the chamber to the desired temperature.

With an exterior height of 39 inches (100cm), the incubator is designed to be floor-standing, yet is also compact enough for bench use. (Not recommended for use on benchtops higher than 32"/81cm). The instrument is supplied with two, adjustable height shelves, while additional shelves can also be purchased separately (item: H2265-SH).

Ordering Information:

Item No.	Description:
H2265-HC*	myTemp 65 Heating and Cooling Incubator, includes two stainless steel shelves
H2265-SH	Extra shelf, stainless steel

*115V with US plug. For 230V (EU plug), please add (-E).

Technical Data:

Temp. Range:	0° to 60°C (Ambient -25°C to 60°C)
Temp. Accuracy:	0.5°C (at 37°C)
Temp. Uniformity:	±1.0.°C (at 37°C)
Temp. Increments:	0.1°C
Dimensions:	
Exterior:	21.25 x 21 x 39.35 in.
(W x D x H)	54 x 53.34 x 99.85 cm
Interior:	15.75 x 12.75 x 19.75 in.
(W x D x H)	40 x 32.4 x 50.2 cm
Timer:	1 min. to 99 hr.: 59 min.
Capacity:	65L or 2.3 cubic feet
Weight:	117 lbs (53kg)
Electrical:	115V, 60Hz or 230V, 50Hz, 385W
Warranty:	2 years