

Swing-out Rotor, GRS-L-1400-4W

4 loadings
 $\leq 90^\circ$



Oval Bucket

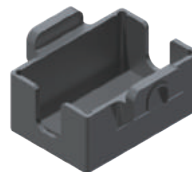
GLB-1400-1400

Bucket bore (w x d x h, mm)
 :134 x 115 x 135
 Radius(mm) : 222.6
 Max.RPM : 4,000
 Max.RCF(g-force) : 3,982
 Max.height for tube fit (mm) : 150

Tube							
Tube capacity (ml)	10	15	15 ml conical	50	50 ml conical	200	400
Tube Rack							
Cat. No.	GAM-10-38(1400)	GAM-15-24(1400)	GAM-c15-24(1400)	GAM-50-12(1400)	GAM-c50-9(1400)	GAM-200-3(1400)	GAM-400-2(1400)
Hole dimension ($\Phi \times L$, mm)	16 x 88	17 x 98	17.2 x 100	29 x 93	29.5 x 100	104 x 39 x 135	104 x 58 x 135
Rack capacity (ea/4)	38/152	24/96	24/96	12/48	9/36	1/4	2/8
Radius (mm)	197.6	197.6	197.6	180.6	187.6	222.6	222.6
Max.RPM	4,000						
Max.RCF (g-force)	3,535	3,535	3,535	3,231	3,356	3,982	3,982

Swing-out Rotor, GRS-L-mw-4W

4 loadings
 $\leq 90^\circ$



Microplate Holder

GLP-mw-1400

Holder bore (w x d x h, mm)
 86.1 x 128.1 x 57.1
 Radius (mm) : 190.5
 Max.RPM : 5,000
 Max.RCF(g-force) : 5,324

Plate			
Plate capacity (ml)	MTP	DWP	Filter Plate
Holder capacity (ea/4)	4/16	1/4	1/4