

Swing-out Rotor, GRS-G-r250-4

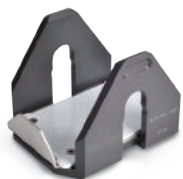
4 loadings
 $\angle 90^\circ$



Rectangular 250 ml Bucket GLB-r250-r250

Bucket bore (w x d x h, mm)
 : 86 x 70.3 x 102.5
 Radius (mm) : 175.2
 Max.RPM : 4,000
 Max.RCF (g-force) : 3,134
 Max.height for tube fit (mm) : 130

Tube											
Tube capacity (ml)	1.5/2.0	3	5	10	15	15 ml conical	50	50 ml conical	15	85	250
Tube rack											
Cat. No.	GAM-m2.0-20 (r250)	GAM-5-12(r250)		GAM-15-12(r250)		GAM-c15-9 (r250)	GAM-50-4 (r250)	GAM-c50-3 (r250)	GAM-85-2(r250)		GAS-250(r250)
Rack capacity (ea/4)	20/80	12/48		12/48		9/36	4/16	3/12	2/8		1/4
Hole dimension (Φ x L, mm)	11.3 x 39	13.5 x 58	13.5 x 80	17.5 x 90		17.5 x 90	30.2 x 90	30.5 x 90	17 x 86.5	38.5 x 86.5	62.5 x 87



Microplate Holder GLP-mw-r250

Holder Dimension (w x d x h, mm)
 : 88 x 128.5 x 80
 Radius (mm) : 153
 Max.RPM : 4,000
 Max.RCF(g-force) : 2,737

Plate		
Plate capacity (ml)	MTP	DWP
Holder capacity (ea/4)	4/16	1/4