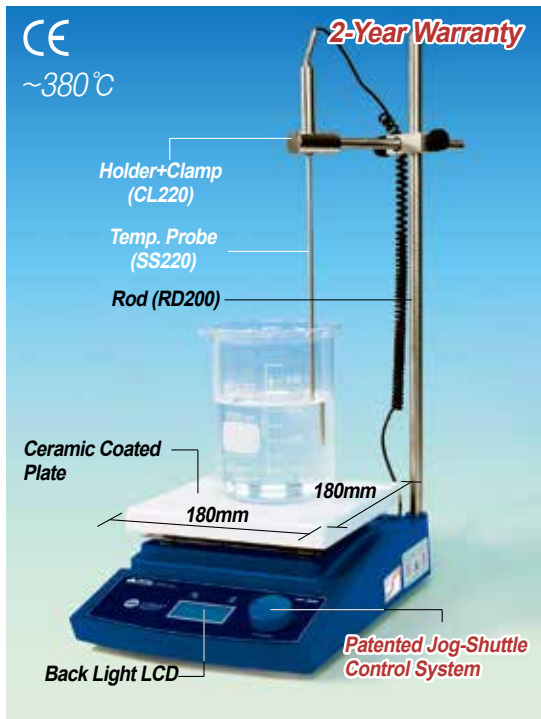
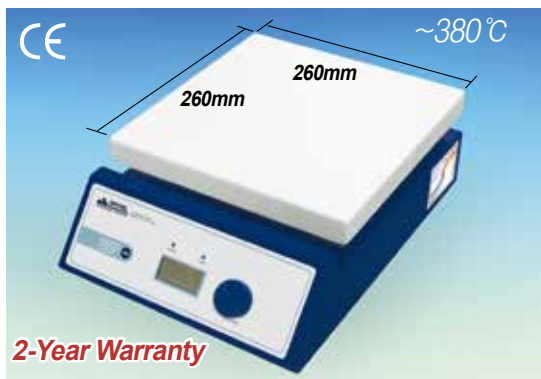


Cat. No	Description	Articles
---------	-------------	----------

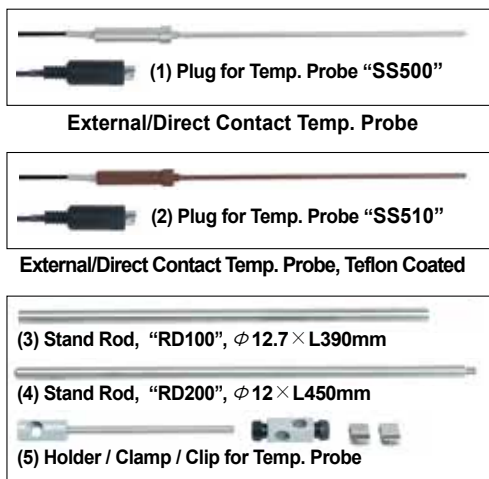
DAIHAN-brand® 380°C Digital Precise Hotplate “HP-D”, Ceramic-Coated Plate, ±0.3°C with Digital Feedback Control System, Back Light LCD, 180×180mm- or 260×260mm-Plate, with Certi. & Traceability  
 디지털 정밀 가열판, 디지털 피드백 온도 제어, 세라믹 코팅 플레이트



(a) 180×180mm Plate-type Digital Precise Hotplate “HP-20D” Package-set



(b) 260×260mm Plate-type Digital Precise Hotplate “HP-30D” Unit only



- Made in Korea ■ CE Certified ■ PL(Product Liability) Insurance
- with Certificate & Traceability : Controlled by Serial Number, Certificate, Delivery-information, and Traceable Data Base System
- Patented Jog-Shuttle Control System
- \* Digital Feedback Control by High-Performance Microprocessor
- \* Smart Design of Body made by Aluminum Die-Casting (HP-20D)
- \* Ceramic Coated Plate-Chemical/Acid Resistance \* Digital LCD with Back-Light Function
- \* Superior Temperature Uniformity : less than 10% on the Plate at Ambient Temperature
- \* Accurate Temp. Control of the Sample in the Vessel using PT100 Sensor (Optional)
- \* Locking Mode for Experimental Safety Supported (Input to Jog Shuttle can be disabled)
- \* User's Self-Compensation Function : to Control Difference between Real Temp. and Indicated Temp. (±20.0°C)

Specifications & Ordering information

Spec.	Model	(a) “HP-20D”	(b) “HP-30D”
Plate Size(mm)		180×180mm Plate-type	260×260mm Plate-type
Material	Body	Powder Coated Aluminum	Powder Coated steel
	Plate	Ceramic Coated Aluminum (Chemical / Acid Resistance, Easy to Clean)	
Temp. Range & Accuracy		Max. 380°C, ±0.3°C at Set Temperature	
Temp. Resolution		0.1 °C-Display, 0.5 °C-Control	
Temp. Uniformity		Specially Designed Heating Module : Temp. Difference 10% less	
Heating Power/Consumption		600 W	1.2 kW
Timer & Alarm		99hr 59min (with Continuous run.), Error status & Timer-end	
Display		Digital LCD with Back-Light Function	
Controller		Digital Feedback Controller with Jog Shuttle Switch (Turn + Push)	
Safety Circuit		Over Temp. Protection	
Permissible Temp. & RH %		Ambient +5 ~ 50°C, 85% RH	
Dimension & Weight		206×307×h99mm, 2.8kg	286×387×h99mm, 3.2kg
Packing Size & Gross Weight		400×280×h200mm, 5 kg	430×320×h200mm, 5 kg
Electrical Rqts.		1 Phase, AC 120 V, 60 Hz or AC 230 V, 50 / 60 Hz	

Unit Only			
Cat. No.	230V	DH.WHP03020	DH.WHP03022
	120V	DH.WHP02020	DH.WHP02022
Price, Each. ₩			
* External Temp. Probe Package-set			
Cat. No.	230V	DH.WHP03021	DH.WHP03023
	120V	DH.WHP02021	DH.WHP02023
Price, Each. ₩			

\* Other Specifications are available upon Customer's Request.

Component of Package-set

- \* “HP-20D” Package-set : Complete with ① Hotplate Unit ② : “SS500” PT100 External / Direct Contact Temp. Probe, ③ “RD200” Stainless steel Support Rod φ 12×L450mm ④ “CL220”Holder+Clamp for External Temp. Probe
- \* “HP-30D” Package-set : Complete with ① Hotplate Unit ② : “SS500” PT100 External / Direct Contact Temp. Probe, ③ “RD100” Stainless steel Support Rod φ 12×L450mm ④ “CL220”Holder+Clamp for External Temp. Probe

Optional External Temp Probes/Stand Rods/Holder, Clamp, Clip

- DH.WHP503060 (1) Direct Contact Temp. Probe, “SS500”, “PT100”, Probe φ 4×L250mm, Cable L190mm
- DH.WHP503061 (2) Direct Contact Teflon Coated Temp. Probe, “SS510”, Probe φ 4×L250mm, Cable L190mm
- DH.WHP503011 (3) Stand Rod, “RD100”, Stainless steel, φ 12.7×L450mm for “HP-30A/30D”, “MSH-30A/30D”, Non-screw
- DH.WHP503036 (4) Stand Rod, “RD200”, Stainless steel, φ 12×L450mm for “HP-20A/20D”, “MSH-20A/20D”, “MSH-50A/55A”, “MSH-50D/55D” and “SMHS”, Screw
- DH.WHP503012 (5) Holder/ Clamp / Clip, “CL220”, for Temp. Probe

Ea. Price, ₩