

Cat. No	Description	Articles
---------	-------------	----------

DAIHAN-brand® Digital General Purpose Water Bath “WB”, 6-/11-/22- Lit, up to 100°C, ±0.1°C, CE-Certi. with Digital Fuzzy Control System, 1×Stainless-steel Flat Lid, and Back Light LCD, with Certi. & Traceability
 정밀 범용 항온수조, 디지털 퍼지 제어 시스템, 스텐레스 스틸 리드 포함



2-Year Warranty

Digital Precise Water Bath, 11Lit. “WB-11”

- Made in Korea
- CE Certified
- PL(Product Liability) Insurance
- with Certificate & Traceability : Controlled by Serial Number, Certificate, Delivery-information, and Traceable Data Base System
- Digital Fuzzy Control System Implementing Superior Temperature Accuracy
- Patented Jog-Shuttle Control System and Digital LCD with Back-Light Function
- * User's Self-Compensation Function to Control Difference between Real Temperature and Indicated Temperature (±10.0°C).
- * 304 Stainless steel Bath & Lid for Superior Durability & High Thermal Efficiency/Constant.
- * Digital Timer Function(99hr 59min) : 'Delay Time' and 'Operation Time' can be Controlled.
- * Storage Function for the Set Values of Temperature and Timer.
- * Locking Mode Supported for Experimental Safety (Input to Jog-Shuttle can be Disabled).

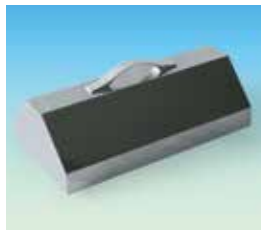
Specifications & Ordering information

Spec.	Model	“WB-6”	“WB-11”	“WB-22”
Capacity		6 Lit.	11 Lit.	22 Lit.
Temp. Range & Accuracy		Room Temp. +5°C ~ 100°C, ±0.1°C		
Temp. Resolution		0.1°C-Display, 0.1°C-Control		
Temp. Uniformity & Probe		±1.0°C, PT100		
Heating Power		800 W	1 kW	2 kW
Timer & Alarm		99hr 59min (Delay & Continuous run), Error status & Timer-end		
Display		Digital LCD with Back-Light Function		
Controller		Digital Fuzzy Controller with Jog - Shuttle Switch (Turn + Push)		
Safety Circuit		Over-Temp. / -Current protection, Sensor Error Detection		
Material		Stainless-steel (#304)-Internal, Powder Coated steel-External		
Lid		included Stainless-steel Flat Lid, Optional Dome Lid		
Drain Valve		None		Mounted(φ9.5~11mm)
Dimension (w×d×h)	Effective Space	300×155×h110mm	302×240×h110mm	500×295×h110mm
	Internal	300×155×h150mm	302×240×h150mm	500×295×h150mm
	External	325×180×h260mm	325×265×h260mm	535×330×h260mm
Packing Size (mm) and Gross Weight (kg)		350×210×h310mm, 8 kg	350×300×h310mm, 10 kg	570×360×h310mm, 14 kg
Electrical Reqts.		1 Phase, AC 120V, 60Hz or AC 230V, 50 / 60Hz		
Cat. No.	230V	DH.WB000106	DH.WB000111	DH.WB000122
	120V	DH.WB000206	DH.WB000211	DH.WB000222
Price, Each. ₩				

* Other Specifications are available upon Customer's Request.



(1) Flat Lid, Stainless-steel (Included)



(2) Dome Lid, Stainless-steel



(3) “BFC106” Lid with Concentric Ring Cover Sets for 6Lit.



(4) “BFC111” Lid with Concentric Ring Cover Sets for 11Lit.



(5) “BFC122” Lid with Concentric Ring Cover Sets for 22Lit. Bath



(6) Test Tube Rack, Stainless-steel

Optional Lids and Tube Rack, Stainless-steel

- DH.WB010206 (2) Dome Lid, for 6 Lit, 324 × 176 × h100mm, “BD206”
- DH.WB010211 , for 11 Lit, 324 × 263 × h100mm, “BD211”
- DH.WB010222 , for 22 Lit, 533 × 328 × h100mm, “BD222”
- DH.WB030106 (3) Lid with 2 × Concentric Ring Cover Sets, for 6 Lit, Stainless-steel, 330 × 182 × h20mm, “BFC106”
- DH.WB030111 (4) Lid with 2 × Concentric Ring Cover Sets, for 11 Lit, Stainless-steel, 329 × 269 × h20mm, “BFC111”
- DH.WB030122 (5) Lid with 6 × Concentric Ring Cover Sets, for 22 Lit, Stainless-steel, 539 × 334 × h20mm, “BFC122”
- DH.WB020106 (6) Tube Rack, for 6 Lit, 36Hole × φ 17mm, “BTH106”, Stainless-steel, 220 × 125 × h78.5mm
- DH.WB020206 (6) Tube Rack, for 6 Lit, 15Hole × φ 32mm, “BTH206”, Stainless-steel, 220 × 125 × h78.5mm
- DH.WB020111 (6) Tube Rack, for 11 Lit, 63Hole × φ 17mm, “BTH111”, Stainless-steel, 220 × 205 × h78.5mm
- DH.WB020211 (6) Tube Rack, for 11 Lit, 25Hole × φ 32mm, “BTH211”, Stainless-steel, 220 × 205 × h78.5mm

Ea. Price, ₩

Water Bath with Validation (IQ, OQ) Service

- DH.WB040106 Validation Service(IQ, OQ), with “WB-6”, “BV106”
- DH.WB040111 , with “WB-11”, “BV111”
- DH.WB040122 , with “WB-22”, “BV122”

Ea. Price, ₩