

Accessories

Extraction Arm

- Materials are selected according to the physical properties of the fumes and gases used.
- Diameter selected according to work type.
- Joint selected according to the working radius.

	Type	Description
Material	Polypropylene	Excellent chemical resistance
	Anodized Aluminum	Lightweight, general use
Diameter	50 mm / 2.0 inch	For fine work
	75 mm / 3.0 inch	For general work
Joint	2 Joint	Within 1 m working radius
	3 Joint	More than 1.5 m working radius

※ Check out the selection guide at [Page 192](#) for details.

Hood

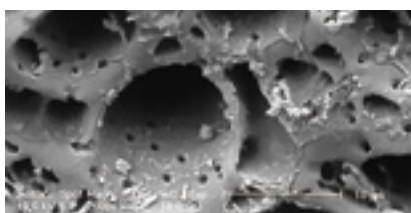
- $\Phi 50$ hood mounted on extraction arm as standard. (selection of white or clear)
- Shape selected according to the nature of the fumes and gases used.
- Material selected according to the job type.
- Strong and chemical resistant using PP and SBC materials.

	Type	Description
Shape	Square	Square Suction of substances heavier than air on the floor
	Dome	Suction of material lighter than air from the top
Material	Polypropylene, Opaque	Simple suction
	Styrene butadiene copolymer, Transparent	Suction as work progresses

※ Check out the selection guide at [Page 193](#) for details.

Lab Companion's Filter Series

- The Lab Companion's carbon filter is an excellent amorphous adsorbent with a high surface area, has fine pores and is manufactured through a multi-level impregnation process.
- Made of 100% impregnated filter, it is more than twice as efficient as general filters.
- Has the efficiency of an excellent composite filter as it simultaneously performs physical adsorption and chemical adsorption.



Electron microscope image of Lab Companion's carbon filter

Filter	Description	Cat. No.
Complex Carbon	Filters a wide range of chemicals, including acid, ammonia, and aldehyde.	AAAB6354
Acid	Filters acid gases such as HCl, HF, H ₂ S and CH ₃ COOH	AAAB6356
Formaldehyde	Filters formaldehyde, acetate aldehyde, etc.	AAAB6358
Ammonia / Amines	Filters Basic Gases Such As NH ₃ , (CH ₃) ₃ N, ETC.	AAAB6359
HEPA	Filters 99.99% of toxic dust and other 0.3 μ m particles	AAAB6353
Pre-Filter	Primarily filters particles to extend the life of other filters.	AAAB6360

※ Select a suitable filter according to the Chemistry used.

※ For the built-in pre-filter, the Particle is filtered first to extend the life of the other filter.

Table Bracket Set

- Bracket for fixing extraction arm to table and flexible duct hose for connecting to the main body.

Model	Dimension (W x D x H, mm / inch)	Cat. No.
Table Bracket Set ($\Phi 50$ mm / 2.0 inch)	165 x 254 x 110 / 6.5 x 10 x 4.3	AAAB6351
Table Bracket Set ($\Phi 75$ mm / 3.0 inch)	165 x 254 x 110 / 6.5 x 10 x 4.3	AAAB6352

Gas Detector & Tubes

- Determine the exchange period by checking the status of the currently installed filter.

	Item	Cat. No.
Gas Detector	KITAGAWA AP-20	AAAB2531
	Benzene, GASTEC-121SP (0.5-10 ppm)	00EAA0001550
Gas Detecting Tube	Toluene, GASTEC-122L (1-100 ppm)	00EAA0001551
	Acetic acid, GASTEC-81L (0.125-25 ppm)	00EAA0001552
	Chloroform, GASTEC-137 (4-400 ppm)	00EAA0001553
	Formaldehyde, GASTEC-91LL (0.05-1 ppm)	00EAA0001554
	Ammonia, GASTEC-3L (0.5-60 ppm)	00EAA0001555