

Accessories

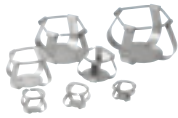
Universal Platform



Universal Platform

Basic accessories required to use Erlenmeyer flasks, test tubes, separated funnels, etc.

Accessories for Universal Platform



Flask Clamp (Stainless Steel)

Erlenmeyer flask mounting (50 ml - 6 L)
High-strength spring maintains excellent clamping.



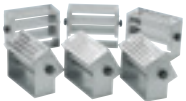
Flask Clamp (Plastic)

Erlenmeyer flask mounting (50 ml - 2 L)
Reduced noise with plastic body and rubber on the bottom. (Using under 40°C, and under 300rpm)



Funnel Clamp

Separated funnel mounting (250 ml - 2L)
Easy detachment/attachment and stable clamping.



Test Tube Rack

Test tube mounting (Φ8 mm - Φ35 mm)
Easily adjustable angle.



Microplate Holder

Various options for Microplate
Single, Tower, Flat A (Large), Flat B (Small)



Lab Sticker

Excellent adhesion as size is 200x200mm, allowing for application to petri dishes, culture bottles, etc.
Temp. Range (°C): 15-60 Max. Speed (rpm): 250

LC GreenBox



LC GreenBox

Monitor the operation status of the device in real time via the mobile app with a simple internet connection.

Set Accessories



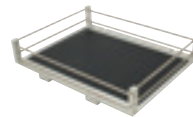
Spring Wire Rack

Fixed with 2-stage grid springs to accommodate various sample container shapes.



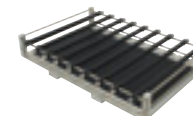
Dedicated Platform

Accessories (250 mL, 500 mL) installed on platform with maximum quantity of flask clamps.



Rubber Mat

Convenient for use with culture bottles and petri dishes with rubber mat to prevent slipping on the bottom.



Universal Attachment

Rubber mat on the bottom and adjustable clamping rod make it a convenient structure for a wide range of applications.



Wire Shelf

Shelf and its bracket enabling sample loading.
(applied to ISS-3075(R)/4075(R) series)



Retractable Foot Caster

Device that makes it easy to move/fix.
(applied to ISS-3075(R)/4075(R) series)



Stand 1 & 2

When using 1 unit of the ISS-7000 model or when using more than 2 units stackable, different height of stands provide convenient access to a platform.



Stacking Kit

Fixing tool for stacked units.
Applied to ISS series models.

Description	IST-3075 Series	IST-4075 Series	ISS-3075 Series	ISS-4075 Series	ISF-7000 Series	ISS-7000 Series
Dedicated Platform (250 ml)	AAA23611-V1	AAA23623-V1	AAA23611-V1	AAA23621-V1	AAA23634	AAA23637
Dedicated Platform (500 ml)	AAA23612-V1	AAA23622-V1	AAA23612-V1	AAA23622-V1	AAA23635	AAA23636
Rubber Mat	AAA23531	AAA23532	AAA23531-V1	AAA23532-V1	AAA23534	AAA23537
Universal Attachment	AAA23511-V1	AAA23512-V1	AAA23511-V1	AAA23512-V1	AAA23505	AAA23517
Lab Sticker	AAA30551	AAA30551	AAA30551	AAA30551	AAA30551	AAA30551
Wire Shelf	-	-	00EDA0008235	00EDA0008233	-	-
Stand 1 with Stacking kits (600 mm height for stacking 1 unit)	-	-	-	-	-	AAA23571
Stand 2 with Stacking kits (300 mm height for stacking 2 unit)	-	-	-	-	-	AAA23572
Retractable Foot Caster	-	-	AAA23801	AAA23802	-	-
Stacking Kit	-	-	AAA23811	AAA23812	-	AAA23573

LC GreenBox

Description	Dimension (W x D x H, mm/inch)	IST-3075 Series	IST-4075 Series	ISS-3075 Series	ISS-4075 Series	ISF-7000 Series	ISS-7000 Series
LC GreenBox	156 x 94 x 34 / 6.1 x 3.7 x 1.3	AAAQ1011	AAAQ1011	AAAQ1011	AAAQ1011	AAAQ1011	AAAQ1011

Description		Model	IST-3075 Series	IST-4075 Series	ISS-3075 Series	ISS-4075 Series	ISF-7000 Series	ISS-7000 Series
		Platform Size (mm/inch)	350 x 350 / 13.8 x 13.8	450 x 450 / 17.7 x 17.7	350 x 350 / 13.8 x 13.8	450 x 450 / 17.7 x 17.7	755 x 520 / 29.7 x 20.5	755 x 520 / 29.7 x 20.5
Universal Platform		Cat. No.	AAA23501-V3	AAA23502-V3	AAA23501-V3	AAA23502-V3	AAA23503-V3	AAA23507
Flask Clamp for Erlenmeyer Flask (Stainless Steel)	50 ml	AAA23550	36	49	36	49	88	88
	100 ml	AAA23551	24	39	24	39	68	68
	250 ml	AAA23552	14	20	14	24	39	39
	300 ml	AAA23556	14	20	14	24	39	39
	500 ml	AAA23553	9	16	9	16	28	28
	1 L	AAA23554	6	9	6	9	18	18
	2 L	AAA23555	4	5	4	6	11	11
	2.8 L	AAA23557	2	4	2	5	8	8
	4 L	AAA23558	-	-	-	4	6	6
6 L	AAA23559	-	-	-	2	5	-	
Flask Clamp for Erlenmeyer Flask (Plastic)¹⁾	50 ml	AAA30570	36	49	36	49	88	88
	100~125 ml	AAA30571	19	29	19	29	48	48
	200 ml	AAA30572	13	21	13	21	35	35
	250 ml	AAA30573	13	19	13	19	35	34
	300 ml	AAA30574	12	19	12	19	35	34
	500 ml ²⁾	AAA30575	9	12	9	12	24	21
	1 L ²⁾	AAA30576	4	9	5	9	12	11
	2 L ²⁾	AAA30577	2	4	4	5	8	6
Funnel Clamp	250 ml	AAA23562	4	6	4	6	15	15
	500 ml	AAA23563	2	4	3	4	10	10
	1 L	AAA23564	-	3	-	3	7	7
	2 L	AAA23565	-	-	-	-	5	5
Test Tube Rack³⁾	Ø8 mm (86ea)	AAA23581	2	4	2	4	7	7
	Ø10 mm (86ea)	AAA23582	2	4	2	4	7	7
	Ø12 mm (58ea)	AAA23583	2	4	2	4	7	7
	Ø14 mm (58ea)	AAA23584	2	4	2	4	7	7
	Ø17 mm (32ea)	AAA23585	2	4	2	4	7	7
	Ø25 mm (19ea)	AAA23586	2	4	2	4	7	7
	Ø35 mm (10ea)	AAA23594	2	4	2	4	7	7
Microplate Holder	Single	AAA23654	8	15	8	15	25	25
	Tower	AAA23651	5	8	6	10	21	21
	Flat A (Large)	AAA23652	-	2	-	2	4	4
	Flat B (Small)	AAA23653	2	2	2	3	6	6

1) In the case of plastic flask clamps mounting, deformation may occur at temperatures over 40°C. Stainless steel flask clamps are recommended when using over 40°C and high temperature environment.

2) Possible to use under 300rpm

3) Maximum quantity on each platform. (no angle condition for test tube rack, it is the maximum quantity that does not cause the rack to tilt.

Description		IST-3075 Series	IST-4075 Series	ISS-3075 Series	ISS-4075 Series	ISF-7000 Series	ISS-7000 Series
Spring Wire Rack (Cat. No.)		AAA23521-V1	AAA23522-V2	AAA31521-V1	AAA31522-V1	AAA23514	AAA23527
Quantity of Erlenmeyer Flask	50 ml	16	25	16	25	45	45
	100 ml	9	16	9	16	28	28
	250 ml	4	9	4	9	18	18
	300 ml	4	9	4	9	18	18
	500 ml	4	5	4	5	15	15
	1 L	2	4	2	4	10	10
	2 L	1	2	1	2	6	6
	2.8 L	1	2	1	2	4	4