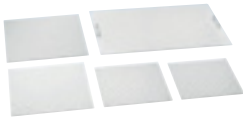


# Accessories

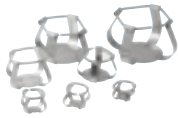
## Universal Platform



### Universal Platform

Basic accessories required to use Erlenmeyer flasks, test tubes, separated funnels, etc.

## Accessories for Universal Platform



### Flask Clamp (Stainless Steel)

Erlenmeyer flask mounting (50 ml - 6 L)  
High-strength spring maintains excellent clamping.



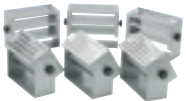
### Flask Clamp (Plastic)

Erlenmeyer flask mounting (50 ml - 2 L)  
Reduced noise with plastic body and rubber on the bottom. (Using under 40°C, and under 300rpm)



### Funnel Clamp

Separated funnel mounting (250 ml - 2L)  
Easy detachment/attachment and stable clamping.



### Test Tube Rack

Test tube mounting (Φ8 mm - Φ35 mm)  
Easily adjustable angle.



### Microplate Holder

Various options for Microplate  
Single, Tower, Flat A (Large), Flat B (Small)



### Lab Sticker

Excellent adhesion as size is 200x200mm, allowing for application to petri dishes, culture bottles, etc.  
Temp. Range (°C): 15-60 Max. Speed (rpm): 250

## LC GreenBox



### LC GreenBox

Monitor the operation status of the device in real time via the mobile app with a simple internet connection.

## Set Accessories



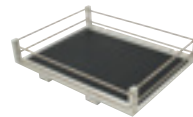
### Spring Wire Rack

Fixed with 2-stage grid springs to accommodate various sample container shapes.



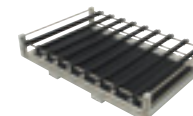
### Dedicated Platform

Accessories (250 mL, 500 mL) installed on platform with maximum quantity of flask clamps.



### Rubber Mat

Convenient for use with culture bottles and petri dishes with rubber mat to prevent slipping on the bottom.



### Universal Attachment

Rubber mat on the bottom and adjustable clamping rod make it a convenient structure for a wide range of applications.



### Wire Shelf

Shelf and its bracket enabling sample loading.  
(applied to ISS-3075(R)/4075(R) series)



### Retractable Foot Caster

Device that makes it easy to move/fix.  
(applied to ISS-3075(R)/4075(R) series)



### Stand 1 & 2

When using 1 unit of the ISS-7000 model or when using more than 2 units stackable, different height of stands provide convenient access to a platform.



### Stacking Kit

Fixing tool for stacked units.  
Applied to ISS series models.

Description	IST-3075 Series	IST-4075 Series	ISS-3075 Series	ISS-4075 Series	ISF-7000 Series	ISS-7000 Series
Dedicated Platform (250 ml)	AAA23611-V1	AAA23623-V1	AAA23611-V1	AAA23621-V1	AAA23634	AAA23637
Dedicated Platform (500 ml)	AAA23612-V1	AAA23622-V1	AAA23612-V1	AAA23622-V1	AAA23635	AAA23636
Rubber Mat	AAA23531	AAA23532	AAA23531-V1	AAA23532-V1	AAA23534	AAA23537
Universal Attachment	AAA23511-V1	AAA23512-V1	AAA23511-V1	AAA23512-V1	AAA23505	AAA23517
Lab Sticker	AAA30551	AAA30551	AAA30551	AAA30551	AAA30551	AAA30551
Wire Shelf	-	-	00EDA0008235	00EDA0008233	-	-
Stand 1 with Stacking kits (600 mm height for stacking 1 unit)	-	-	-	-	-	AAA23571
Stand 2 with Stacking kits (300 mm height for stacking 2 unit)	-	-	-	-	-	AAA23572
Retractable Foot Caster	-	-	AAA23801	AAA23802	-	-
Stacking Kit	-	-	AAA23811	AAA23812	-	AAA23573

## LC GreenBox

Description	Dimension (W x D x H, mm/inch)	IST-3075 Series	IST-4075 Series	ISS-3075 Series	ISS-4075 Series	ISF-7000 Series	ISS-7000 Series
LC GreenBox	156 x 94 x 34 / 6.1 x 3.7 x 1.3	AAAQ1011	AAAQ1011	AAAQ1011	AAAQ1011	AAAQ1011	AAAQ1011