



Autoclave for liquids and solids sterilization "Autester ST DRY PV III" 25

CAPACITY: 25 LITRES. SPACE FOR 12 BOTTLES OF 250 ML, 9 OF 500 ML, 3 OF 1000 ML AND 2 OF 2000 ML.
CONFORMS TO THE REGULATION - 2014/68/EU EQUIPMENT UNDER PRESSURE.



Complete selection of programs. Displays in English - Spanish - French.

FEATURES

- Sterilization chamber and lid made from AISI 304 stainless steel.
- External case epoxy coated.
- Digital control of all autoclave operations.
- TFT 3,5" touch screen .
- Air filter, purifies air before entering in the sterilization chamber.
- Separate clean water reservoir and waste water.
- RS-232 Interface output of parameters to a computer or for printer.
- USB output for PEN-DRIVE data logging.

SAFETY

- Safety valve.
- Prevents the door being opened if under pressure or high temperature is produced.
- Temperature safety thermostat.
- Door closed correctly detector
- Thermally protected lid.

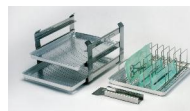
MICROPROCESSOR FUNCTIONS

Controlled parameters are:

- Sterilization temperature from 105°C up to 134°C.
- Sterilization time from 3' to 59'.
- Drying time from 20' to 60'.
- Up to 10 user-configurable programs.
- Six operating modes:
 - Solid 1 - Solid 2 fractions. - Solid 3 fractions - Drying - Liquids - Liquids 2 probes
- Verification test
- Vacuum - Bowie Dick.
- Settings:
 - Units - languages (Spanish, English, French). - Printer module On/Off. - Clock: date/time.
 - Password for adjustment.
 - Calibration.
 - Temperature probe 1 - Temperature probe 2 - Water dosing - Presion.
- Audible and visual alarm for overtemperature and insufficient temperature.
- Network failures detection and memorization.
- Safety thermostat by software.
- Sterilization cycles data logging with capacity for over 500 cycles.
- Internal cleaning program.
- Graphical representation of real time process.



MODEL	Part No.	Capacity litres	Ø/Depth (usables) cm	Height/Width/Depth (exterior) cm	Power W	Weight Kg
AUTESTER ST DRY PV III 25	4002420	25	30 35	58 46 59	2510	52



Comes complete with three trays, extractor forceps, and additional support for instruments and sterile wrapping bags.

PARAMETERS AND PROGRAMS PRE INSTALLED IN THE AUTOCLAVE MICROPROCESSOR

(Note: All these parameters are adjustable by the user)

Nº Programme	Description	Temperature Sterilization	Time Sterilization	Time Dry	Purge
0	Free	-	-	-	-
1	Unwrapped instruments	134 °C	4 min	15 min	2 (1)
2	Wrapped instruments	134 °C	12 min	30 min	3 (2)
3	CJD	134 °C	20 min	20 min	3 (2)
4	Delicate unwrapped	121 °C	15 min	15 min	2 (1)
5	Delicate wrapped	121 °C	30 min	30 min	3 (2)
6	Disinfecting	105 °C	25 min	15 min	1 (3)
7	Liquids	121 °C	30 min	-	1 (3)
8	Solids	121 °C	15 min	30 min	1 (3)
9	Solids	134 °C	4 min	30 min	1 (3)

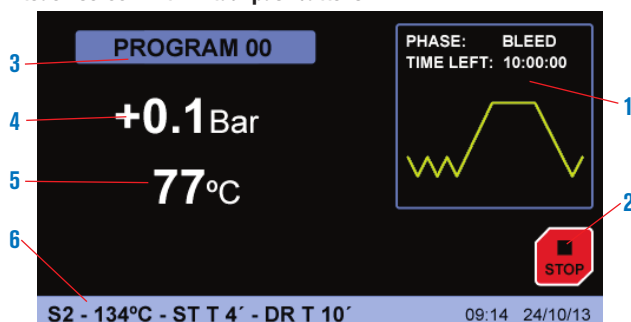
- (1) Double Vacuum purge.
- (2) Triple Vacuum purge.
- (3) Atmospheric purge (No vacuum).

MESSAGES:

- | | |
|-----------------------|---------------------------|
| 1. E 2PROM | 10. TEMPERATURE LOW FAULT |
| 2. RTC FAULT | 11. INPUT ERROR |
| 3. SENSOR PRECISION | 12. STERILIZATION |
| 4. HEATER PROBE | 13. LEVEL 1 |
| 5. CHAMBER PROBE | 14. LEVEL 2 |
| 6. OVER PRESSURE | 15. DOOR |
| 7. VACUUM | 16. PRINTER NO PAPER |
| 8. PRESSURE | 17. PAPER JAM |
| 9. BOILER TEMPERATURE | 18. ELECTRICAL FAULT |

CONTROL PANEL

TFT touch screen with virtual pushbuttons.



1. Graphical representation of real time process
2. Start/Stop pushbutton.
3. Running program.
4. Press indicator.
5. Temperature indicator.
6. Running program parameters.

ACCESSORIES

Ink Printer (no thermal).
Paper size 2 1/4" (56 mm) wide.
Includes communications and power cable.

Model

Part No.	Height/Width/Depth cm	Power	Weight Kg
4120113	4 16 10	DC 5V 3A	1



Water distiller especially for Autoclaves. (See page 63).

Bag sealers (See page 68 and 69).

Special tray for bottles of 0.25, 0.5, 1 or 2 litres. Part No. **4002416**