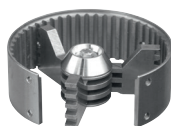


**GRINDING ATTACHMENTS**

| Sales No. | Product                    | Description   |
|-----------|----------------------------|---|
| 35031001  | Hammer grinding attachment | Consists of 3-armed rotor and grooved stator/tool included.                                 |
| 35031002  | Blade grinding attachment  | Consists of 3-armed rotor with cutting knives and stator with 3 cutting bars/tool included. |



**SIEVE ATTACHMENTS**

| Sales No. | Product   | Description          |
|-----------|-----------|----------------------|
| 35095002  | Sieve 0.2 | Hole diameter 0.2 mm |
| 35095005  | Sieve 0.5 | Hole diameter 0.5 mm |
| 35095008  | Sieve 0.8 | Hole diameter 0.8 mm |
| 35095010  | Sieve 1.0 | Hole diameter 1.0 mm |
| 35095015  | Sieve 1.5 | Hole diameter 1.5 mm |
| 35095020  | Sieve 2.0 | Hole diameter 2.0 mm |
| 35095030  | Sieve 3.0 | Hole diameter 3.0 mm |
| 35095040  | Sieve 4.0 | Hole diameter 4.0 mm |
| 35095050  | Sieve 5.0 | Hole diameter 5.0 mm |
| 35095060  | Sieve 6.0 | Hole diameter 6.0 mm |



Depending on the sample, even finer results can be achieved by grinding with two or more sieves with progressively smaller hole sizes. Each mill includes a 2.0 mm sieve attachment.

Hole diameter: Depending on the product, 1/5 of sieve diameter is the approximately attainable particle size.

Example: Sieve 0.2 mm / 5 = 0.04 mm (40µm)