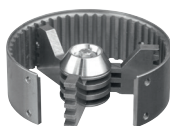


GRINDING ATTACHMENTS

| Sales No. | Product | Description |
|-----------|----------------------------|---|
| 35031001 | Hammer grinding attachment | Consists of 3-armed rotor and grooved stator/tool included. |
| 35031002 | Blade grinding attachment | Consists of 3-armed rotor with cutting knives and stator with 3 cutting bars/tool included. |



SIEVE ATTACHMENTS

| Sales No. | Product | Description |
|-----------|-----------|----------------------|
| 35095002 | Sieve 0.2 | Hole diameter 0.2 mm |
| 35095005 | Sieve 0.5 | Hole diameter 0.5 mm |
| 35095008 | Sieve 0.8 | Hole diameter 0.8 mm |
| 35095010 | Sieve 1.0 | Hole diameter 1.0 mm |
| 35095015 | Sieve 1.5 | Hole diameter 1.5 mm |
| 35095020 | Sieve 2.0 | Hole diameter 2.0 mm |
| 35095030 | Sieve 3.0 | Hole diameter 3.0 mm |
| 35095040 | Sieve 4.0 | Hole diameter 4.0 mm |
| 35095050 | Sieve 5.0 | Hole diameter 5.0 mm |
| 35095060 | Sieve 6.0 | Hole diameter 6.0 mm |



Depending on the sample, even finer results can be achieved by grinding with two or more sieves with progressively smaller hole sizes. Each mill includes a 2.0 mm sieve attachment.
 Hole diameter: Depending on the product, 1/5 of sieve diameter is the approximately attainable particle size.
 Example: Sieve 0.2 mm / 5 = 0.04 mm (40µm)