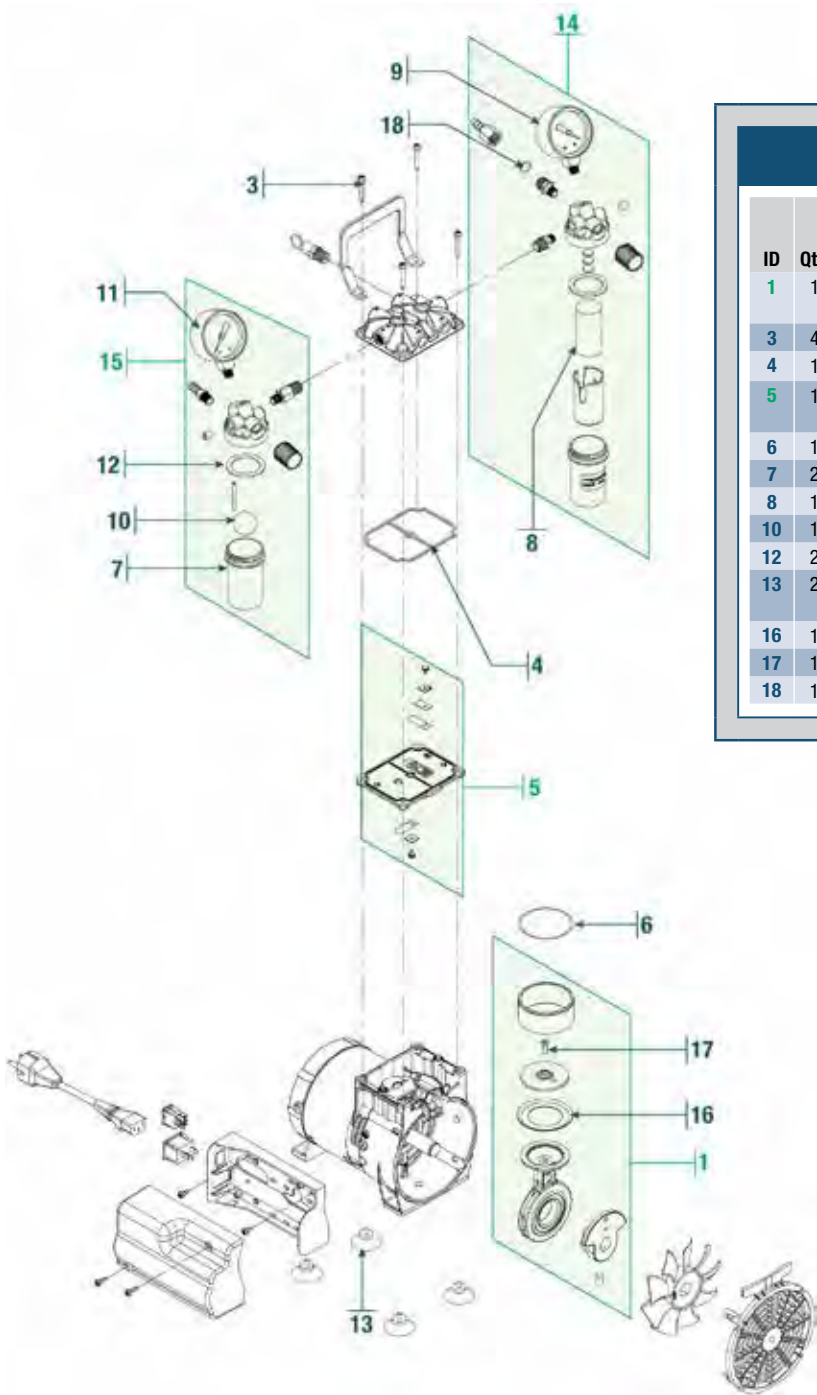


Standard Duty Dry Vacuum Pumps

WOB-L® Models 2522C-05/2534C-02



Comprehensive Service Kits for Models 2522C-05/2534C-02

ID	Qty.	CAT. No.	Description	Service Kit CAT. No. 2546K-03	Seal Service Kit CAT. No. 2546K-04	Feet Service Kit CAT. No. 2500K-04
1	1	2534K-10	Connecting Rod Assembly	1	----	----
3	4	Note 1	Head Screw	4	----	----
4	1	Note 1	Gasket Seal	1	1	----
5	1	2567K-02	Valve Plate Assembly ²	1	----	----
6	1	Note 1	O-Ring	1	1	----
7	2	Note 1	Jar Plastic	1	1	----
8	1	Note 1	Filter Element	1	1	----
10	1	Note 1	Ball	1	1	----
12	2	Note 1	Gasket	1	1	----
13	2	Note 1	Rubber Suction Feet	1	1	4
16	1	Note 1	Piston Cup Seal	----	1	----
17	1	Note 1	Retainer Screw	----	1	----
18	1	Note 1	O-Ring	1	1	----

Individual Spare Parts for Models 2522C-05 (100V 50/60Hz)

ID	Qty.	CAT. No.	Description
9	1	726025	Pressure Gauge
11	1	726022	Vacuum Gauge
14	1	2522K-06	Pressure Regulator Assembly
15	1	2522K-05	Vacuum Regulator Assembly

Individual Spare Parts for Model 2534C-01 (230V 50/60Hz USA)

ID	Qty.	CAT. No.	Description
9	1	726025	Pressure Gauge
11	1	726022	Vacuum Gauge
14	1	2522K-06	Pressure Regulator Assembly
15	1	2522K-05	Vacuum Regulator Assembly

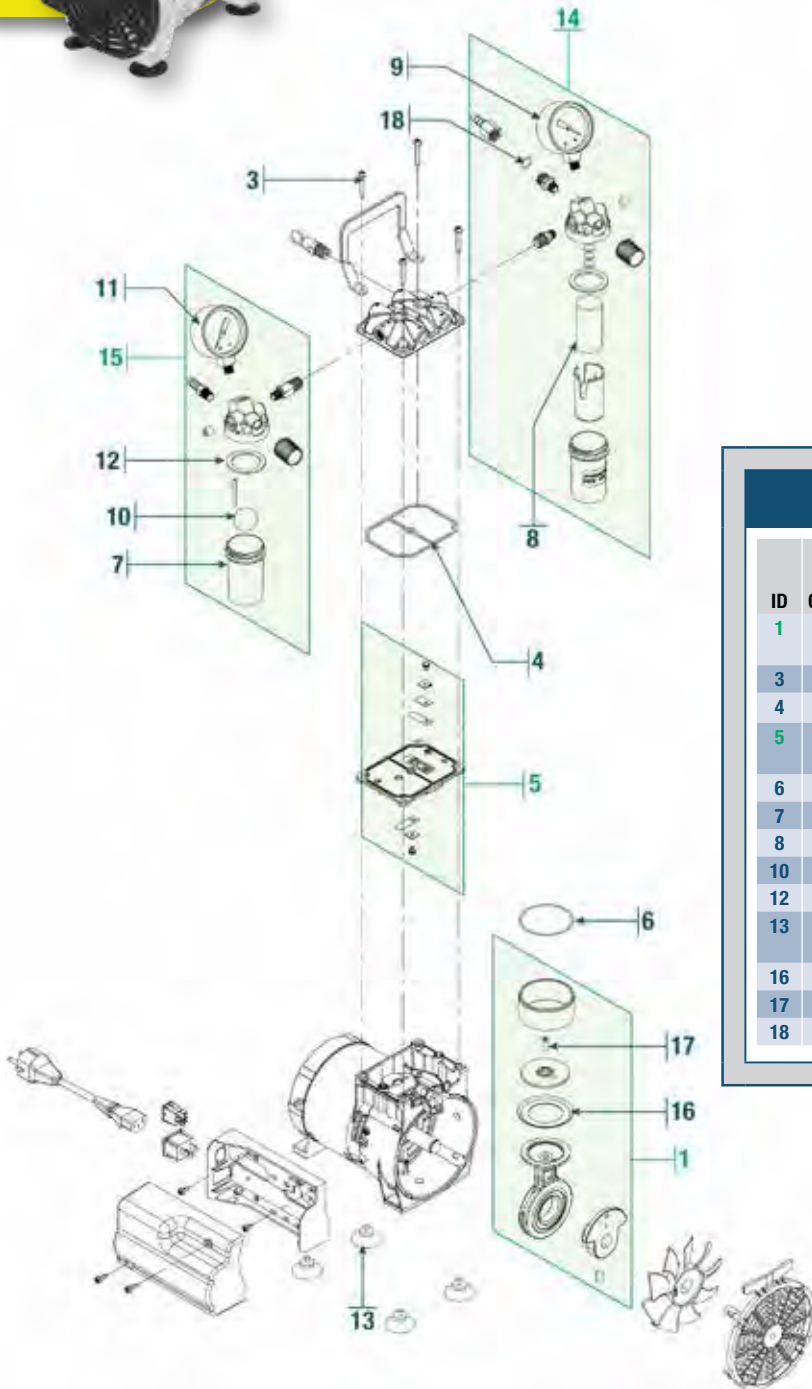
Individual Spare Parts for Model 2534C-02 (230V 50/60Hz EU)

ID	Qty.	CAT. No.	Description
9	1	726025	Pressure Gauge
11	1	726024	Vacuum Gauge
14	1	2522K-06	Pressure Regulator Assembly
15	1	2522K-05	Vacuum Regulator Assembly

Note 1. These parts are not available separately, but are supplied in the repair kits.
 2. 2565K-02 Valve Plate Assembly also includes O-Rings #4 and #6.

Standard Duty Dry Vacuum Pumps

WOB-L® Models 2546B-01/2546C-01/2546C-02



Comprehensive Service Kits for Models 2546B-01/2546C-01/2546C-02

ID	Qty.	Part Number	Description	Service Kit CAT. No. 2546K-03	Seal Service Kit CAT. No. 2546K-04	Feet Service Kit CAT. No. 2500K-04
1	1	2546K-01	Connecting Rod Assembly	1	----	----
3	4	Note 1	Head Screw	4	----	----
4	1	Note 1	Gasket Seal	1	1	----
5	1	2567K-02	Valve Plate Ass'y Kit ²	1		----
6	1	Note 1	O-Ring Cylinder	1	1	----
7	2	Note 1	Jar Plastic	1	1	----
8	1	Note 1	Filter Element	1	1	----
10	1	Note 1	Ball	1	1	----
12	2	Note 1	Gasket	1	1	----
13	2	Note 1	Rubber Suction Feet	1	1	4
16	1	Note 1	Piston Cup Seal	----	1	----
17	1	Note 1	Retainer Screw	----	1	----
18	1	Note 1	O-Ring	1	1	----

Individual Spare Parts for Models 2546B-01 (115V 60Hz) 2546C-01 (230V 50/60Hz)

ID	Qty.	CAT. No.	Description
9	1	726025	Pressure Gauge
11	1	726021	Vacuum Gauge
14	1	2522K-06	Pressure Regulator Assembly
15	1	2522K-05	Vacuum Regulator Assembly

Individual Spare Parts for Model 2546C-02 (230V 50/60Hz)

ID	Qty.	CAT. No.	Description
9	1	726025	Pressure Gauge
11	1	726024	Vacuum Gauge
14	1	2522K-06	Pressure Regulator Assembly
15	1	2522K-05	Vacuum Regulator Assembly

Note 1. These parts are not available separately, but are supplied in the repair kits.
 2. 2565K-02 Valve Plate Assembly also includes O-Rings #4 and #6.

Catalog No.	Page No.
2025	42,43
2025K-06	42
2026	42,43
2027	42,43
2028	42,43
2032	39
2034	40
2037	41
2037K-01	40,41,43
2042	39
2042D-20	44
2044	40
2047	41
2047K-01	38,39,43,44
2401E	46
2500K-04	48,49-54
2511	55
2511B-75	55
2511C-75	55
2515	55
2515B-75	55
2515C-75	55
2515K-02	55
2515K-22	55
2522B-01	48
2522C-02	48
2522C-05	49
2522K-01	48,55
2522K-03	48
2522K-04	48
2522K-05	5,48,49,50
2522K-06	5,48,49,50
2534B-01	48
2534C-02	49
2534K-01	48
2534K-03	48
2534K-10	49
2546B-01	50
2546C-02	50
2546K-01	50
2546K-03	49,50
2546K-04	49,50
2561	52
2562	51
2563	52
2563K-01	52
2563K-03	52
2565K-02	48
2565K-50	5,51
2567	51
2567B-50	51
2567C-50	51
2567K-01	51
2567K-02	49,50,51,52
2567K-03	51
2567K-04	51,52
2567K-50	52
2580	53
2581B-24	54
2581B-50	54
2581C-24	54
2581C-50	54
2581K-03	54
2581K-04	54
2585	53
2585K-01	53
2585K-02	53
2585K-03	53
2585K-04	53
2585K-50	5,53,54
301E	46
301T	46
301Z	46
302076	37
302079	37
302080	37
302081	37
302082	37

Catalog No.	Page No.
302201	8,10
302202	8,10
302203	8
304801	8
304802	8
304803	8
305320	8
305340	8
305350	8
305360	8
305380	8
3100	56
3200	56
3200K-01	56
3310050-10	8
331020-10	8
331020-5	8
331030-5	8
331040-10	8
331040-5	8
331050-5	8
331060-10	8
331060-15	8
331060-20	8
331060-5	8
331080-10	8
331080-5	8
3432K-01	56
3432K-02	56
3432K-04	56
3434K-01	56
3434K-02	56
3434K-04	56
383101	9
383102	9
384101	9
384102	9
387121	9
387132	9
388101	9
388102	9
400941	13
400956	13
401041-US	46
402008-01	37
402041-02	37
402043-US	46
402044-US	46
402046-US	46
402106-US	46
41-0551	23,27
41-0668	19,20,24,25,26,28
41-0959	20,26,28
41-0961	36
41-0995	21
41-1010	18
41-1040	22,23,27
41-1042	22,23,27
41-1045	22,23,27
41-1059	22,23,27
41-1060	23,27
41-1477	18,21
41-1478	18,21
41-1482	18,21
41-1484	18,21
41-1487	18,19,21,26,28
41-1492	18,21
41-1497	18
41-1499	18,21
41-1500	18,21
41-1501	18,21
41-1518	19,24,25,26,28
41-1682	19,26
41-1683	19,26
41-1688	19
41-1736	18,21,23-28
41-1771	20
41-1772	20

Catalog No.	Page No.
41-1773	20
41-1907A	20,24,25,28,36
41-1925	18
41-1940A	19,21,26,36
41-2045	19,20,24,25,26,28
41-2074	19,20,24,25,26,28
41-2092	24,25,28
41-2093	24,25,28
41-2191	22,23,27
41-2369	22
41-2374	22
41-2377	22
41-2378	22
41-2814	18,21
41-2984	36
41-3753	18,21,22,23,17
501241	8
501251	8
501262	8
501283	8
505121	9
506121	9
506122	9
506142	9
600053-US	4
601E	46
601T	46
61-0006A	29
61-0007A	29
61-1014	19,20,24,25,26,28
61-1121A	29
61-1124B	29
61-2177B	30
61-2178A	30
61-2179A	30
61-2229A	19,20,24,25,26,28
61-2308	30
61-2370	19,20,24,25,26,28
61-5304	35
61-5350	36
61-5356	29,30
61-5359	34,35,36
61-5359	36
61-6049	33
61-6050	32
61-6051	31
61-6052	31,33
61-6053	32
61-6460	31,33
61-6463	33
61-6464	31
61-6465	32
61-8101	19,20,24,25
61-8108D	19,24,25,26,28
61-8113C	24,28
61-8116	23
61-8250C	19,24,25,26,28
61-8274B	36
61-8319B	26,28
61-8476C	22
61-8540	23
61-8548C	27
61-8581	36
61-8622	22,23,27
61-8651	25
61-8674	27
61-8675	23
61-8678	27
61-8684	26
61-8685	19
61-8687	19,26
61-8689	18
61-8691	18,21
61-8693	18,21
61-8698	19,20,24,25,26
61-8699	18,21
61-8701	27
61-8702	23

Catalog No.	Page No.
61-8770	18,21
61-8803	19,20,24,25,26
61-8901	22,23,27
61-8912	19,24,25
61-8916	22,27
61-8989	21
61-9570A	35
61-9571B	35
61-9595C	34
61-9615A	34
61-9616B	34
61-9935	34,35
66-0250	36
66-0304	19,20,24,25,26,28
700458	5
726020	5
726021	5,48,50,51,53,54
726022	49
726023	5
726024	5,48,50-54
726025	5,48-54
726123	42
726125	42
726130	5,18-28
8111D-25	47
8111K-01	47
8113D-25	47
8115D-20	44
829901	13
8890	29
88905K-05	7
88907K-06	7
8890K-02	29
8905	30
8905K-02	30
8905K-06	30,31
8907	31
8907K-05	7,32-35
8907K-06	32,33
8912	32
8915K-02	34
8917	33
8917K-04	31,32,33
8917K-05	31,32,33
8920	34
8920A-46	36
8920K-06	7,34,35
8925	35
8925A-46	36
8925K-02	35
89807K-05	31
8995C	45
8995G-11	3
8995G-15	3
8995G-20	3
8995P-11	3
8995P-15	3
8995P-20	3
901Z	46
CRR-1	36
CRR-1A	36
CRR-1C	36
LVS 105 T-10 ef	46
P12Z-101	37
P23Z-301	37
P6Z-101	37
VB 521 CV	4