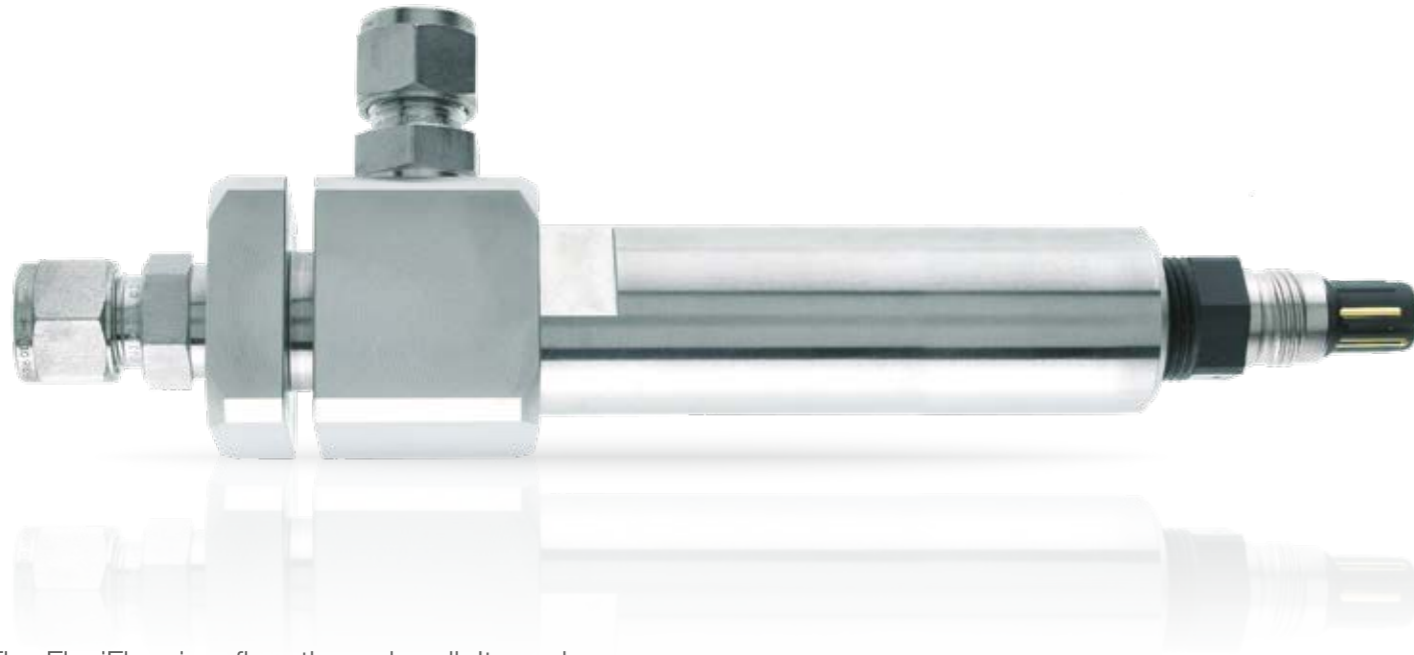


# FlexiFlow SL 10



The FlexiFlow is a flow-through cell. It can be used in all cases where pH or oxygen must be reliably measured in ion-weak media including coolant piping in power generating stations.

The sample is fed into the cell from the bottom at a low flow speed, and out of the cell again at the side. A groove cut into the FlexiFlow allows it to easily be attached anywhere with commercially available screws.

## Benefits

- ▶ Compact design
- ▶ Easy to attach to a plate
- ▶ For use in small pipes where sensors cannot be inserted directly
- ▶ Self draining



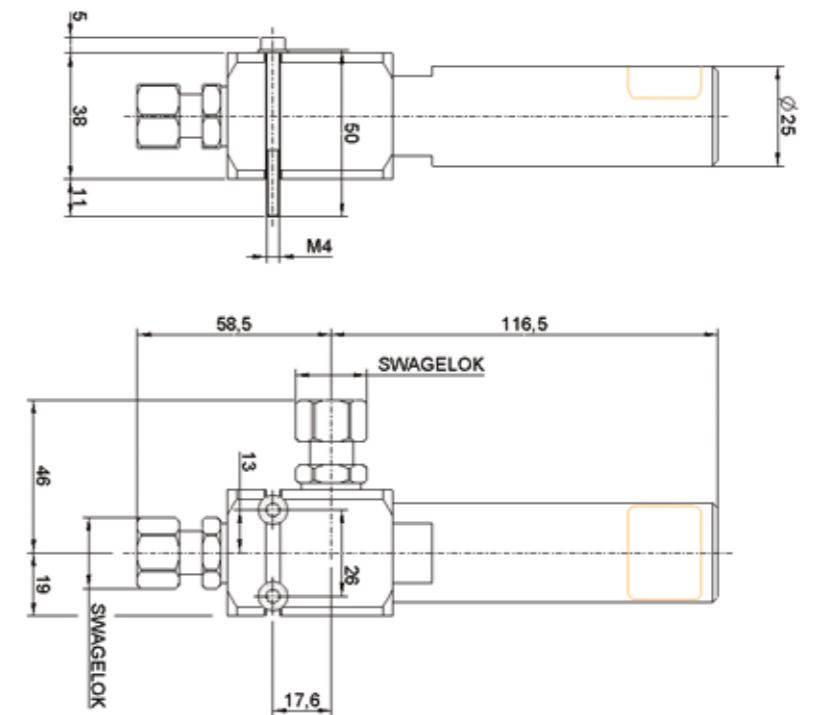
## Specifications

Wetted parts	Stainless Steel 1.4435
O-ring material	EPDM
Pressure range (relative to ambient)	0 to 16 bar
Temperature range	-10 to 130 °C
Sensor thread	PG 13,5
Sensor a-length	120 mm
Process connection	Swagelok 10 mm

For more specifications see [www.hamiltoncompany.com](http://www.hamiltoncompany.com)

## Dimensional drawings

all dimensions in mm



## Ordering Information

Type	Ref
FlexiFlow SL 10	237340