

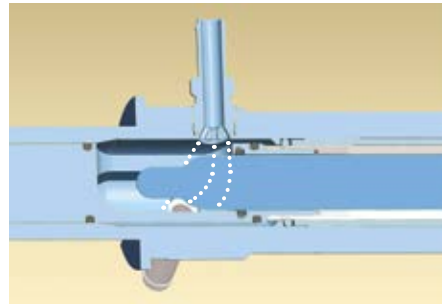
RetractoFit Bio



The RetractoFit Bio is a retractable housing designed for 225 mm sensors in hygienic applications in the biotechnology, food & beverage and the pharmaceutical industry. It allows the operator to mount and dismount sensors while the process is running. Safe sensor handling during the process is guaranteed because insertion into a vessel without sensor is impossible so is removal while in the measuring position. It is easy to use and maintain: only one press on the red button is needed to move the sensor into or out of the process. All o-rings can be easily be replaced by the operator without special tools.



“Did you know... that the RetractoFit Bio has a special rinsing chamber with angled connections for cleaning solutions and special inlet construction guarantees an entire cleaning of the chamber through a swirl effect”



Benefits

- ▶ Integral safety mechanism
- ▶ Sensor can be withdrawn from the process for cleaning, calibration or replacement
- ▶ Special hygienic design of cleaning chamber
- ▶ Easy maintenance

Specifications

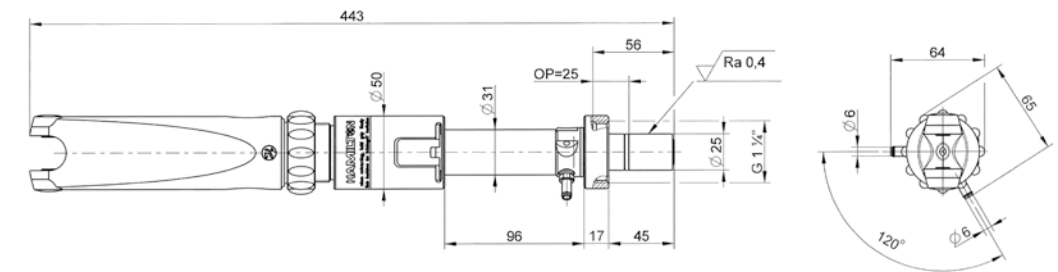
Wetted parts	Stainless Steel 1.4435
O-ring material	EPDM
O-ring position	22 mm and 55 mm
Pressure range (relative to ambient)	0 to 6 bar
Temperature range	-10 to 140 °C
Sensor thread	PG 13.5
Sensor a-length	225 mm
Surface finish	R _a < 0.4 μm (N5 electropolished)

For more specifications see www.hamiltoncompany.com

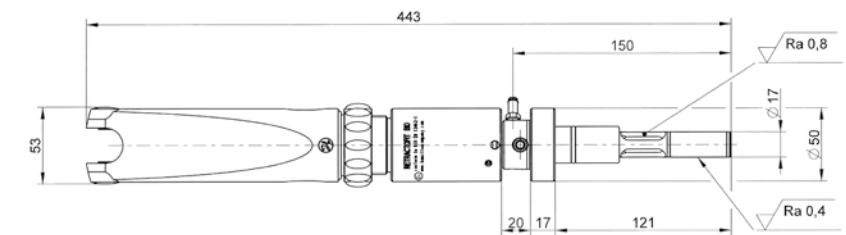
Dimensional drawings / RetractoFit Bio 25

all dimensions in mm

Maintenance position



Measuring position



Ordering Information

Type	Process Connection	Ref
RetractoFit Bio 25	G 1/4	237480
RetractoFit Bio 55	G 1/4	237440

Accessories



• **FDA Service Kit** Ref 237338

Safety Socket see page 152

