

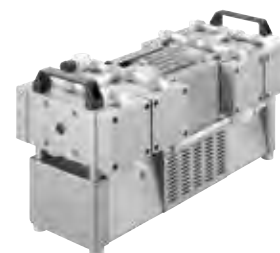
Diaphragm Vacuum Pumps | DRYFAST® Chemical Duty Pumps



Models
2032 / 2042
DRYFAST Ultra



Models
2052 / 2054



Models
2163 / 2062 / 2064 /
2067

Coated Heads	Flow Rate > 100 L/min				Ultimate Vacuum Pressure ≤ 2 torr			
2163	2054	2064	2067	2032	2042	2052	2062	
6.1 (173)	3.4 (100)	6.1 (173)	7.8 (221)	0.9 (25)	1.2 (35)	2.3 (65)	4.2 (119)	
----	----	----	----	1.25 (21)	1.75 (29)	----	----	
6 (8)	6 (8)	6 (8)	56 (75)	2 (2.7)	2 (2.7)	1.5 (2)	1.5 (2)	
29.7	29.7	29.7	27.72	29.85	29.85	29.9	29.9	
0.5/0.6 (370/440)	1/2 (370)	0.5/0.6 (370/440)	0.5/0.6 (370/440)	1/5 (150)	1/5 (150)	0.53 (390)	0.53 (370)	
No	No	No	No	Yes	Yes	No	No	
hose connector available	1/4 (8)	hose connector available	hose connector available	1/4 (7)	1/4 (7)	1/4 (8)	1/4 (8)	
NW 16 - 1/4" NPT ²	NW 16 - 1/4" NPT ²	NW 16 - 1/4" NPT ²	NW 16 - 1/4" NPT ²	M14(1/8)	M14(1/8)	NW 16 - 1/4" NPT	NW 16 - 1/4" NPT	
72.3 (32.8)	40.3 (18.3)	72.3 (32.8)	72.3 (32.8)	21.25 (9.6)	21.25 (9.6)	40.3 (18.3)	72.3 (32.8)	
21x11x12 (53x28x31)	9x15x7 (23x38x18)	21x11x12 (53x28x31)	21x11x12 (53x28x31)	13.8x6.8x8.8 (35x17x22)	13.8x6.8x8.8 (35.2x17x22)	9x15x7 (23x38x18)	21x11x12 (53x28x31)	
88.2 (40.1)	48.5 (22)	88.2 (40.1)	88.2 (40.1)	25 (11.3)	25 (11.3)	49.8 (22.6)	40.3 (18.3)	
23.6x15.8x16.1 (60x40x41)	18.9x12.6x11.8 (48x32x30)	23.6x15.8x16.1 (60x40x41)	23.6x15.8x16.1 (60x40x41)	21x14x15 (52x35x37)	21x14x15 (52x35x37)	10.2x16.6x7.5 (26x42x19)	9.1x15x6.7 (23x38x16.9)	
2163B-01 CE	2054B-01 CE	2064B-01 CE	2067B-01 CE	2032B-01 CSA	2042B-01 CSA	2052B-01 CE	2062B-01 CE	
2163C-02 CE	2054C-02 CE	2064C-02 CE	2067C-02 CE	2032C-02 CE	2042C-02 CE	2052C-02 CE	2062C-02 CE	
----	----	----	----	2032C-05	2042C-05	----	----	

For a Complete System

Inlet/Exhaust Separator Jars
230 ml glass jar assembly attaches to pump intake or exhaust to capture ingested liquids.
See page 79 for replacement Jars.



1423B

Pump Model	CAT. No.
All DryFast models	1423B

Digital Vacuum Regulator

- Rack mountable
- Variable vacuum control

The Digital Vacuum Regulator works with Welch DryFast™ pumps or any brand dry pump with flow up to 35 l/min torr vacuum ranging from 1 torr(1.3 mbar) to atmosphere.
See p. 76 for more information.



Pump Model	CAT. No.
2014, 2034, 2032, 2044, 2042	1640A-01



Component	page
• Traps	69
• CAPTURE Recovery System	71
• Hose	67
• Gauges	76
• Vacuum Regulator	76
• Service Kit	80

Vacuum Controller, Table Top 825 to 1 Torr



- Controls vacuum level, venting and cooling water
- Two-point vacuum control via in-line PTFE solenoid valve
- Chemically resistant ceramic diaphragm sensor

Digitally displayed user-friendly operating instructions. Controls vacuum from 1100 to 1 mbar (825 to 1 torr). Turn and press jog wheel for menu selection. Illuminated display to show graphically vacuum level vs time. Multiple language options (English, German, Spanish, French and Russian). May operate from PC with RS 232 port (requires control software, CAT. no. 620037). Store up to 3 vacuum pressure vs time ramps. Vacuum pressure units of mbar, torr, psi and hPa. Connect pump and apparatus using 3/8 in. ID tubing (DN 8). Electrical requirement 90-260V, 50/60Hz and includes Schuko, UK and US plug. Dimensions LxWxH in.: 7.6x5.5x4.1 in. (20x14x11 cm).

Model	Sensor	Controller CAT. No.	Spare sensor
VCB 521 cv	Internal	600053	---
VCB 521 es	External	600066	620052-04

Digital Vacuum Regulator 700 to 2 Torr



- Controls vacuum level from 700 to 2 torr. Reads vacuum from 760 to 2 torr.
- Two-point vacuum control via in-line PTFE solenoid valve
- Internal chemically resistant piezoelectric sensor

A membrane keypad and intuitive menus enable easy vacuum control via process time and vacuum pressure set points. Controls vacuum from 700 to 2 torr (933 to 2 mbar). User designates 1 or 2 point vacuum level set points to control vacuum levels for a designated timed runs for up to five programs. Controller may be placed on bench surface or mounted on a hood rack with the provided thumbscrew fitting. Vacuum pressure units of torr, mbar, and pascal. Connect pump and apparatus using 1/4 ID tubing (DN 7). Dimensions LxWxH in.: 7.3x5.2x5.6 in. (19x13x14 cm). Weight 2 lbs (0.9 kg). Shipping dimensions LxWxH: 12x9x12 in. (19x13x14 cm). Shipping wt. 6 lbs (2.7 kg).

Model	Electrical Requirement	CAT. No.
1640	115/230V, 50/60Hz	1640A-01

Piza 101 Vacuum Gauge 1050 to 1 mbar



- External chemically resistant ceramic diaphragm sensor
- Handheld vacuum meter

External vacuum sensor may be connected via KF 16 (NW16) flange to pump or apparatus using 3/8 in. ID tubing (DN 8). LCD read-out. Operates on standard 9V battery or with AC/DC adapter. Comes with sensor, cable and AC/DC adapter plus 9V battery. Includes Schuko, UK and US plug adapter. Dimensions LxWxD 4.9x3.1x1.4 in. (12x8x4 cm). Select chemical duty version for harsh chemical fume measurements.

Model	Range mbar	Gauge CAT. No.	Spare Sensor CAT. No.
PIZA 101	1050-1	600071-US	620002-01
PIZA 101 Chemical Vapors	1050-1	600074-US	620002-03

Torr Range Vacuum Gauge 760 to 1 Torr



1520B-01

Kit 1520K-10

- Internal piezoelectric reads results to a large LCD display
- Available as stand alone unit or in a kit CAT No. 1520K-10
- Mercury free

Take fast, easy vacuum measurements from 1 to 760 torr (1013 mbar) at multiple locations with this portable vacuum gauge. Use standard 3/8" ID vacuum hosing to connect to vacuum source. Operates on standard 9V battery or using AC adapter. Meter dimensions: 3-5/8"Wx1-1/4"Dx5-3/4"H. Available as standalone unit or in convenient carrying case kit with frame case/stand, battery, AC adapter, and vacuum hosing length. Stands upright using optional protective frame case only provided in kit CAT No. 1520K-10

Model	Description	CAT No.
1520 Gauge only	Standalone unit (set up default in torr)	1520B-01
1520 Gauge in kit	Carrying case kit includes gauge, frame case/stand, battery, AC adapter (for US plug) and vacuum hosing length	1520K-10
1520 Gauge only	Standalone unit (set up default in mbar)	1520C-02
1520 Gauge in kit	Carrying case kit includes gauge, frame case/stand, battery, AC adapter (for Schuko and UK plug), and vacuum hosing length	1520K-11