

Accessories for dispensing systems

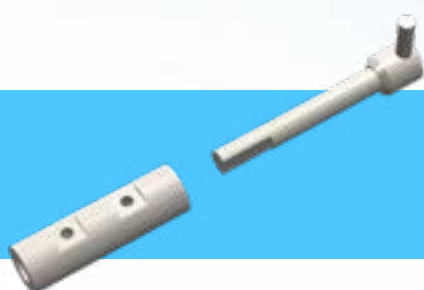
Accessories	Part number	Description
Fitting for 3.2 mm	10721-0003	Fitting for tube AD 3.2 mm ; 1/8", UNF ¼-28
Fitting for 1.56 mm	10721-0001	Fitting for tube AD 1,56 mm ; 1/16", UNF ¼-28
Fitting for 3.0 mm	10721-0003	Fitting for tube AD 3.0 mm ; 1/8", UNF ¼-28
M8 Connector	10721-0005	Pump head connector M8 for HPLH 300
M10 Connector	10738-0002	Pump head connector M10 for HPLH 1000
PTFE Tubing		
PTFE Tubing 3.2 mm	10758-0001	PTFE Tubing AD 3.2 mm, ID 1.6 mm, 1/8", Length: 1 m
PTFE Tubing 1.6 mm	10758-0002	PTFE Tubing AD 1.6 mm, ID 1.0 mm, 1/16", Length: 1 m
PTFE Tubing 5.0 mm	10291-0003	PTFE Tubing AD 5.0 mm, ID 4.0 mm, Length: 1 m
PTFE Tubing 2.4 mm	10721-0020	PTFE Tubing AD 2.4 mm, ID 1.6 mm, Length: 1 m
PTFE Tubing 6.0 mm	10291-0023	PTFE Tubing AD 6.0 mm, ID 4.0 mm, Length: 1 m
FEP Tubing		
FEP Tubing 3.0 mm	10291-0019	FEP Tubing AD 3.0 mm, ID 2.0 mm, Length: 1 m
Filling and Discharge Tubes		
Filling tube	60700-0000	Filling tube for Contiburette, PTFE, Length: 300 mm
Titration tube	60701-0000	Titration tube for Contiburette, FEP, Length: 1m
Discharge tube	60702-0000	Discharge tube for Contiburette, FEP, bended with fine tip
Flask Adapters		
A32-25	60703-0000	Flask adapter
A32-28	60704-0000	Flask adapter
A32-38	60705-0000	Flask adapter
A32-40	60706-0000	Flask adapter
A32-45	60707-0000	Flask adapter
Cables and Software		
RS232 extension cable	30275-0051	RS232 cable 1.8 m
Y-Cable	60729-0000	Y-Cable for connection of further units to RS232
RS485-RS232 adapter cable	61703-0000	Interface cable for connection of Contiburette to RS232 PC interface
Software	Upon request	Control software for liquid handling



20 CS
Ceramic



200
Ceramic



200 CS
Ceramic

Select ceramic pump head suitable for your application