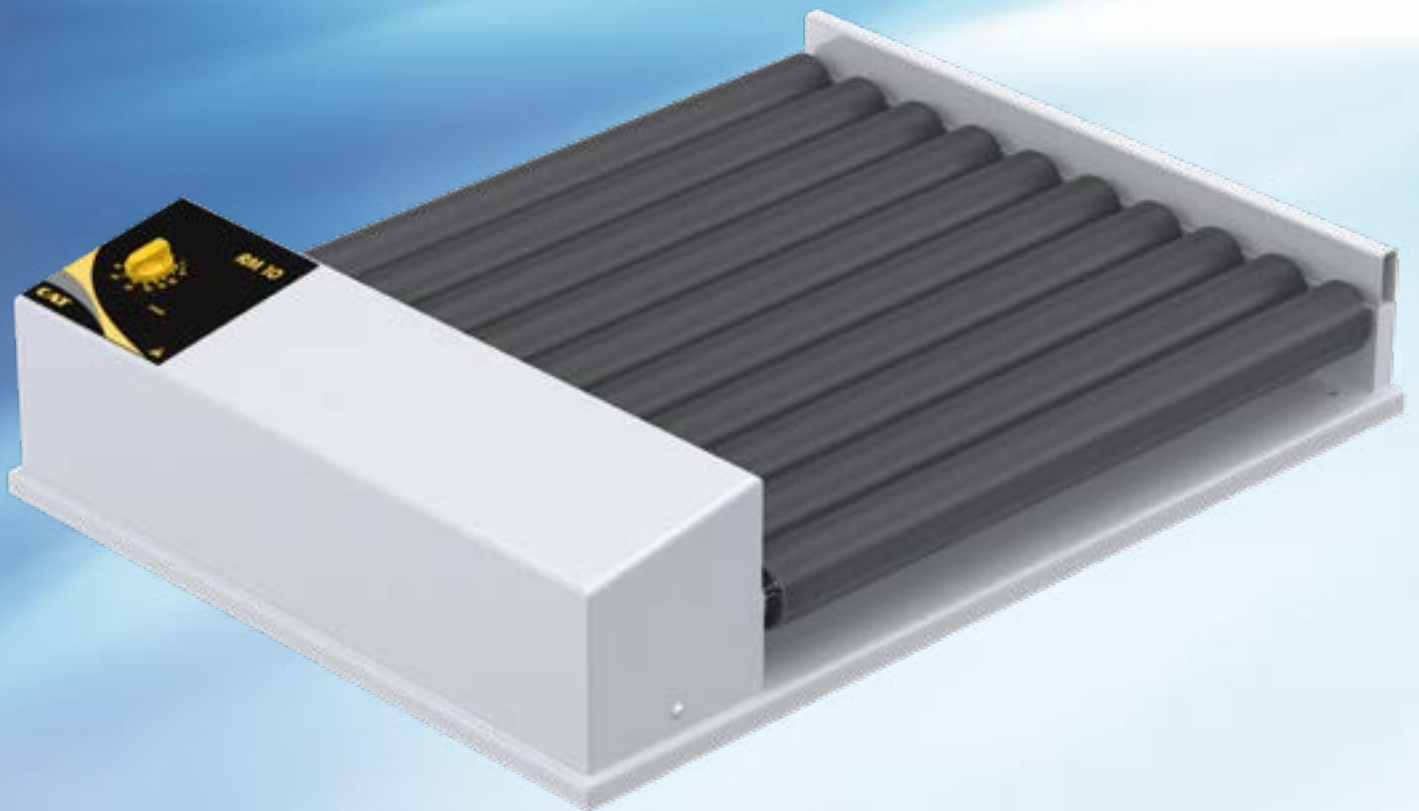


Roller Mixers

- **Roller mixers for daily laboratory routines**
- **Removable rollers**
- **Wide speed range**
- **Low voltage power supply**



RM 5 / RM 10

Five or ten synchronized rotating PVC rollers provide a uniform and gentle swaying mixing of test tubes. Sufficient space allows for numerous test tubes to be placed horizontally along the surface of the oscillating rollers for simultaneous gentle and homogeneous mixing.

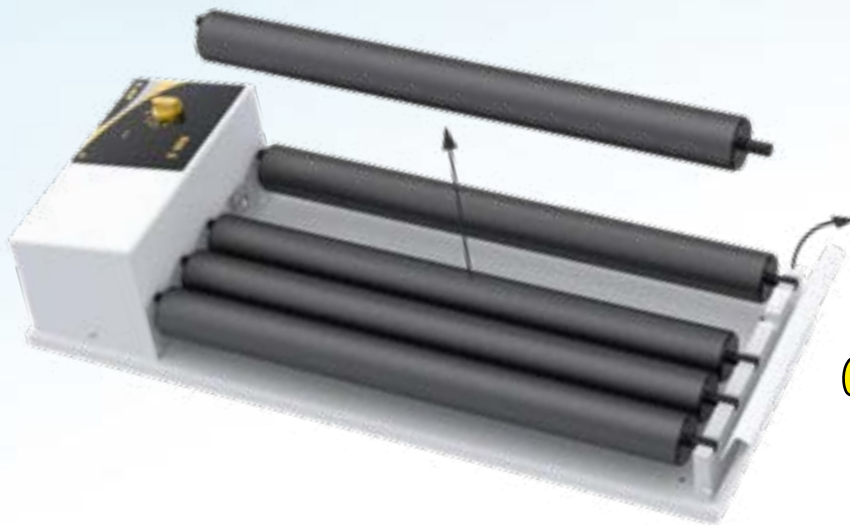
This kind of mixer is especially designed for the uniform mixing of medical laboratory tests of blood, haematological determinations and other cell suspension samples. In addition it prevents sedimentation in samples such as dyes, paints, oil and cosmetics, etc.

The models RM 5 and RM 10 have a 24 VDC drive, a power supply with connectors for EU, US, UK and AU is included. In these two models each roll can be removed individually without tools. These roller mixers move everything in your laboratory, from the test tube to 5l bottles.



Technical Data	RM 10	RM 5	RM 5K	RM 5F
Speed range [1/min]	4 - 30 10 - 70	4 - 30 10 - 70	4 - 30	40
Length of rolls [mm]	330	330	216	334
Number of rolls	10	5	5	5
Removable rolls	Yes	Yes	No	No
Rolls material	PVC	PVC	PVC	PVC
Load, max. [kg]	5.0	5.0	5.0	5.0
Power supply [V]	See: order information	See: order information	See: order information	See: order information
Weight [kg]	6.5	3.7	3.0	3.7
Dimensions [WxDxH mm]	360 x 480 x 113	180 x 480 x 113	180 x 340 x 113	180 x 480 x 113
Protection class according to DIN EN 60529	IP 32	IP 32	IP 32	IP 32

Order Information	Part Number			
24 VDC (rpm: 10 - 70)	60207-0030	60207-0070		
24 VDC (rpm: 4 - 30)	60207-0100	60207-0110	60207-0060	
24 VDC (rpm: 40)				60207-0020



Make it suitable for your needs

Accessories	Part Number	Description
Centric rolls	40207-0020	Centric rolls for horizontal rolling movement without tilting
Excentric rolls	40207-0010	Standard rolls for rolling and tilting movement