

Homogenizers

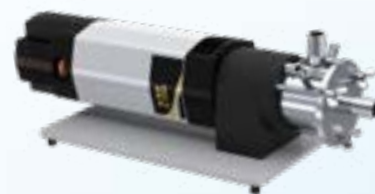
- **Smart In-line homogenizer**
- **Stainless steel housing**
- **Universal tube connectors**
- **Chamber cooling (DK 40)**



Flow-through chamber.

The DK series stainless steel flow-through chamber fit the shaft with ceramic seal. In-line units work according to the rotor-stator principle with high shear rates. Extremely fine distribution of solid particles (suspensions) and liquids in a basic liquid (emulsions) is achieved by the combined effect of different particle reduction effects using this system.

Pressure-rated for 0.7 to 2 bar.



Technical Data	DK 30	DK 40
Flow rate (H2O) [L/min]	20.0 ¹	80.0 ¹
Chamber cooling	-	Yes
Applicable Driving motor	X 1000, X 1000D	X 1740 ²
Applicable Dispersing Tools	G 20	GD 40 ³
Inlet and Outlet connectors, diameter [mm]	20.0	20.0
Cooling connectors, diameter [mm]	-	10.0
Weight [kg]	0.7	6.0
Dimensions [LxWxD/H mm]	120 x 85 x 50	410 x 200 x 160

¹ - depend of dispersing tool and driving motor combination

² - part must be ordered separately

³ - part is always assembled

Order Information	Part Number		
DK 30	60428-0000	-	-
DK 40-N	-	-	60429-000N
DK 40-V	-	-	60429-000V
DK 40-F	-	-	60429-000F

