

LABORATORY JACK "LAB-ELE"

With anodised aluminium base.

Part No. **1000294** Usable platform: 115 x 140 mm.
Elevated height: 260 mm.
Maximum support weight: 1 kg.

Part No. **7000295** Top plate: 200 x 200 mm.
Maximum elevated height: 260 mm.
Max. support weight: 1.7 kg.
With hole and clamp screw for a support rod of 10 Ø x 600 mm high.



LABORATORY JACKS "LAB-STEEL"

Made completely of AISI 304 stainless steel.

Models:

"LAB-STEEL" MINI

Part No. **1001104** Platform Dims.: 145 x 145 mm. Elevation height 55 to 155 mm. Maximum support weight: 1.3 Kg.

"LAB-STEEL" MEDI

Part No. **1001161** Platform Dims.: 200 x 200 mm. Elevation height 65 to 270 mm. Maximum support weight: 2 Kg.

"LAB-STEEL" MAXI

Part No. **1001105** Platform Dims.: 250 x 250 mm. Elevation height 65 to 270 mm. Maximum support weight: 3 Kg.

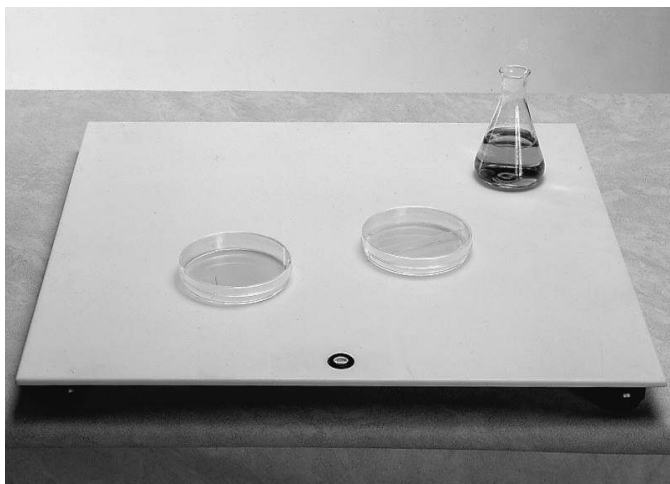


TABLE TOP "ALMANDINE"

Made of polyester mineral resin.

Features:

Excellent chemical resistance, with resistance to class 1 and 2 chemicals.
Resists abrasion, boiling water, dry heat, fire and scratches.
Stains easily removed with a detergent or abrasive cleaner.

Applications:

Protects bench top surfaces against aggressive chemicals, burns and scratches.
Suitable for working with: Acids, alkali bases, solvents or dyes.
Preparation of horizontal agar gels.
Preparation of petri dishes, etc.

Part No.	Width	Thickness	Depth	
1001090	48 cm	0.6 cm	45 cm	Without level
1001091	48 cm	0.6 cm	45 cm	With adjustable level supports



STABILISING RINGS "CIRCUM"

P.V.C coated steel.

Applications:

The weight of the ring stabilises and prevents flasks from floating when placed in a water bath. Suitable for Conical, volumetric and all types of flasks.

Part No.	Colour	Mode	Ø interior mm.	Weight g.
1001169	red	open	50	207
1001170	red	open	70	340
1001171	red	open	100	470
1001734	blue	closed	48	270
1001735	blue	closed	70	360
1001736	blue	closed	90	440

Ring support holder, made of stainless steel.

Part No. **1001737**