

### LABORATORY JACK "LAB-ELE"

With anodised aluminium base.

Part No. **1000294** Usable platform: 115 x 140 mm.  
Elevated height: 260 mm.  
Maximum support weight: 1 kg.

Part No. **7000295** Top plate: 200 x 200 mm.  
Maximum elevated height: 260 mm.  
Max. support weight: 1.7 kg.  
With hole and clamp screw for a support rod of 10 Ø x 600 mm high.



### LABORATORY JACKS "LAB-STEEL"

Made completely of AISI 304 stainless steel.

Models:

#### "LAB-STEEL" MINI

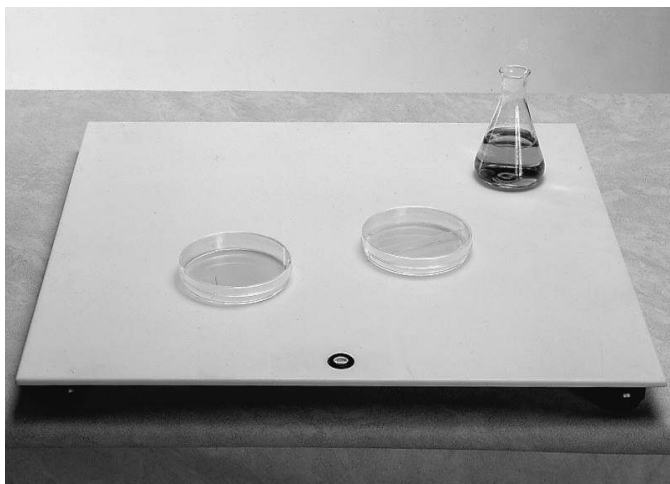
Part No. **1001104** Platform Dims.: 145 x 145 mm. Elevation height 55 to 155 mm. Maximum support weight: 1.3 Kg.

#### "LAB-STEEL" MEDI

Part No. **1001161** Platform Dims.: 200 x 200 mm. Elevation height 65 to 270 mm. Maximum support weight: 2 Kg.

#### "LAB-STEEL" MAXI

Part No. **1001105** Platform Dims.: 250 x 250 mm. Elevation height 65 to 270 mm. Maximum support weight: 3 Kg.



### TABLE TOP "ALMANDINE"

Made of polyester mineral resin.

#### Features:

Excellent chemical resistance, with resistance to class 1 and 2 chemicals.  
Resists abrasion, boiling water, dry heat, fire and scratches.  
Stains easily removed with a detergent or abrasive cleaner.

#### Applications:

Protects bench top surfaces against aggressive chemicals, burns and scratches.  
Suitable for working with: Acids, alkali bases, solvents or dyes.  
Preparation of horizontal agar gels.  
Preparation of petri dishes, etc.

Part No.	Width	Thickness	Depth	
<b>1001090</b>	48 cm	0.6 cm	45 cm	Without level
<b>1001091</b>	48 cm	0.6 cm	45 cm	With adjustable level supports



### STABILISING RINGS "CIRCUM"

P.V.C coated steel.

#### Applications:

The weight of the ring stabilises and prevents flasks from floating when placed in a water bath. Suitable for Conical, volumetric and all types of flasks.

Part No.	Colour	Mode	Ø interior mm.	Weight g.
<b>1001169</b>	red	open	50	207
<b>1001170</b>	red	open	70	340
<b>1001171</b>	red	open	100	470
<b>1001734</b>	blue	closed	48	270
<b>1001735</b>	blue	closed	70	360
<b>1001736</b>	blue	closed	90	440

Ring support holder, made of stainless steel.

Part No. **1001737**